

LIBRARY OF CONGRESS



0 014 108 761 7





— THE —
LEONARD MANUAL

— OF THE —

• • **CEMETERIES** • •

— OF —

NEW YORK AND VICINITY.

A HANDY GUIDE

31
1000
6000
Embodying a brief history and description of all the regular New York and neighboring cemeteries, their location and accessibility, together with an official list of prices of graves, lots and plots; a summary of the rules and regulations governing same, and such other information as will be found appropriate, interesting and valuable.

COMPILED AND PUBLISHED BY

J. H. LEONARD,

30 GREENWICH AVENUE,

NEW YORK.

1895.

F128

.61

.A1L5

COPYRIGHT.
J. H. LEONARD,
1895.

K.K. J. 31-11

PREFACE.

The aim of this little work is to supply a need, which in the local cemetery field has long been wanting. It represents an effort at the gathering of special information concerning the cemeteries of New York and vicinity, and the reduction of the same into concise and readable form. The cemetery is usually the last thought to occupy the mind of mankind, but moments do come when the inquiry is presented regarding the location of the local cemeteries and their prices, and to enable an inquiring public generally to possess itself of the proper information on the subject is one of the intentions of the author in offering this volume.

Some of the most beautiful cemeteries in the world are located within twenty-five miles of this city. The combined efforts of famous landscape artists and sculptors, aided by nature, have been spent in beautifying these resting places of the departed, and millions of dollars of invested capital are represented within their borders. The information herein contained has been supplied in nearly every instance by the officials of the various cemeteries treated of, and consequently may justly be considered official in its character. Should this volume meet with the desired success, an annual edition will be published on more comprehensive and elaborate lines.

THE AUTHOR.

NEW YORK, January 1, 1895.

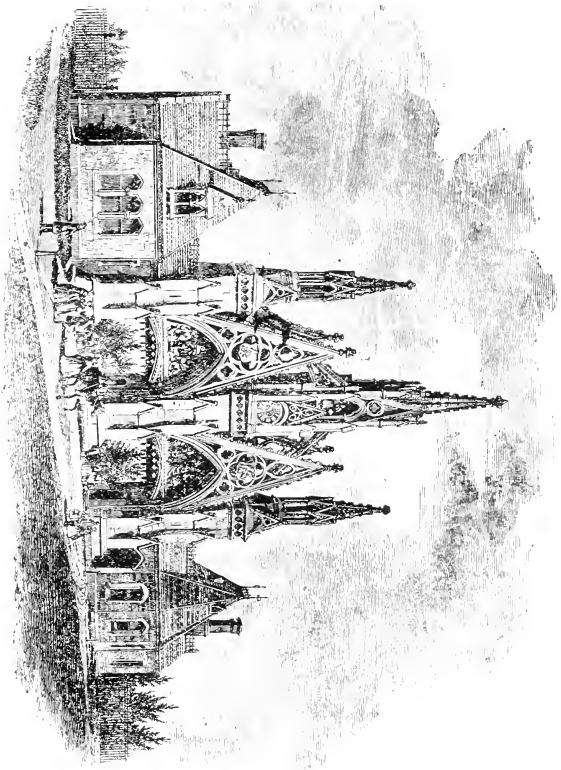
AHAWATH CHESEDS CEMETERY,**EAST WILLIAMSBURGH, NEW YORK.****OFFICE ON GROUNDS.**

This is a small Jewish cemetery situated in East Williamsburgh, near Lutheran Cemetery. It comprises about 13 acres, and it is said that there are several hundred bodies buried within its limits. It is reached from New York by the surface cars from Grand and Roosevelt Streets ferries, and the Long Island Railroad trains to Middle Village.

ARLINGTON CEMETERY,**ARLINGTON, HUDSON COUNTY, NEW JERSEY.****OFFICE, 239 WASHINGTON ST., JERSEY CITY.****TELEPHONE 521 JERSEY CITY.**

Arlington Cemetery was founded in 1882, and opened in July of the following year. It embraces at present about 40 enclosed acres, and is one of the prettiest cemeteries in the State of New Jersey. It is located at Arlington, about six miles from Jersey City and Hoboken ferries, on the New York & Greenwood Lake Railroad, and can be reached from New York by that railroad and by the West Newark Avenue, Jersey City, and Belleville turnpikes. Already there have been about 2,000 interments; and the average

MAIN ENTRANCE GREENWOOD CEMETERY.



number of interments for the last three years has been 250 a year. Arlington claims the distinction of having been the first New Jersey cemetery to adopt the "landscape lawn plan," and the wisdom of this plan has been amply demonstrated in this cemetery.

PRICES.

Adult's single graves, 3x8 x 7 feet.....	\$16
Child's " " under 10 years, 7 feet deep.....	12
Infant's " " 3 feet x 6 inches long and 7 feet deep.....	8
" " " 3 feet long and 7 feet deep.....	6

The price of plots range from \$115 and upwards, and contain 108 square feet, allowing for four graves. The erection of corner posts, sodding, and perpetual care are included in the purchase price of each lot.

The charges for reopening graves are : child's grave, \$4 ; adult's, \$5, and extra depth, \$6. Two interments are allowed in a single grave, and twelve hours' notice is required before the reopening of a grave can be secured.

As the lawn plan prevails in this cemetery, no enclosure of any kind is permitted around graves or plots. Headstones and footstones cannot exceed eighteen inches in height and not less than six inches thick and thirty inches wide. Bodies may be disinterred by mutual consent of grave or lot owners and trustees, and when a plot is purchased by a grave owner, the original cost of the grave, less the cost of opening, is allowed in part payment of the lot.

H. Dummer is President of the cemetery ; J. H. Pratt, Comptroller ; H. F. Torrey, Secretary and Treasurer, and James Sickels, Superintendent of the grounds.

BAPTIST CEMETERY,**PATERSON, NEW JERSEY.****OFFICE ON GROUNDS, OAK AND LALEY STREETS.**

No graves or lots are sold in the Baptist Cemetery. It is one of the oldest in Paterson and is small in extent. It belongs to the members of the Baptist Churches of that city and within recent years few interments have been made in it.

The cost of reopening a grave is \$4. The estimated number of bodies buried in this cemetery is 2,500.

BAYSIDE CEMETERY,**JAMAICA, L. I.****OFFICE ON GROUNDS.**

About twenty acres comprise the extent of Bayside Cemetery, which is located in Jamaica, Long Island. The cemetery is reached by the electric cars from East New York or by the Long Island Railroad to Woodhaven station. Several hundred bodies are buried in this cemetery. The superintendent is Isaac Stamper.

BAY VIEW CEMETERY,**JERSEY CITY, N. J.****OFFICE, OCEAN AND CHAPEL AVENUES, JERSEY CITY.****TELEPHONE NO. 8 JERSEY CITY.**

Bay View Cemetery is situated on Ocean Avenue, Greenville, Jersey City, two and one-half miles from Cortlandt and Desbrosses Street ferries, Jersey City, and lies adjacent to New York Bay Cemetery, being separated therefrom by Chapel Avenue. It is a comparatively new cemetery and its lots and plots are owned by prominent Jersey City residents, among others E. F. C. Young, a well-known banker of Jersey City. The cemetery was founded June 2, 1884, and opened in July, 1885. It is a beautiful cemetery, laid out on the lawn plan, and comprises seventeen and one-half acres. About 2,600 bodies have been interred, and the average number of interments per year is 600. The grounds are divided into four sections known as Bay View Section, Edgewood Section, Morningside Section, and Cedar Lawn Section, and are reached by the Bayonne and Greenville trolley lines from the Pennsylvania ferry, Jersey City; from New York by Desbrosses Street and Cortlandt Street ferries, and by the Central Railroad of New Jersey, to Greenville Station. The price of single graves is \$25, \$20 and \$18, including opening; lots \$1.25 per square foot. As New York Bay Cemetery operates Bay View Cemetery, the size of graves and

plots, cost of opening graves, number of interments, vault charges, etc., are the same in both cemeteries.

Charles E. Souther is President ; Augustus Zabriskie, Vice-President ; John W. Heck, Secretary and Treasurer, and Thomas W. Tilden is Superintendent.

BEECHWOOD CEMETERY,

NEW ROCHELLE, N. Y.,

OFFICE ON GROUNDS.

Beechwood Cemetery is situated on Beechwood Avenue, New Rochelle, is about thirty acres in extent, and is reached by the New Haven Railroad. It is about forty years old, and with an average of 150 interments per year it is estimated that there are about 5,000 bodies buried in this cemetery.

The price of single graves is \$13, which includes the opening and the size 3x8x6 feet. The reopening charges are \$5 for adult's and \$3 for children's graves. The plots range from \$200 to \$250, 16x16 feet, with twelve graves. There is a vault for which a charge of \$15 is made for three months with a gradual rebate. J. G. Ross is the Superintendent.

ESTABLISHED 1830.

H. E. TAYLOR & CO.,

NEW YORK.

Manufacturers of Fine Grade

Funeral Goods.

STRICTLY WHOLESALE.

Now building at 154 East 23d Street a **seven-story fire-proof building**, wherein will be located our warerooms and offices on and after May 1st, 1895.

NEW CASKET FACTORIES:

508, 510, 512 E. 72nd Street, 511, 513 E. 71st Street,
New York.

CASKET HARDWARE FACTORIES:

Hadlyme, Conn.

BERGEN CEMETERY.

BERGEN AVE. AND VROOM ST., JERSEY CITY, N. J.

OFFICE, 21 HOBOKEN AVE., JERSEY CITY.

About one hundred interments are made annually in Bergen Cemetery, and it is estimated that there are 2,000 bodies buried in its graves. It was opened in 1836 and is located corner of Bergen Avenue and Vroom Street, Jersey City, and is reached by the Montgomery Street or Newark Avenue cars from the Pennsylvania ferries, a mile and a half distant. Single graves, 3x8, cost \$10, while plots, 14x14 feet are \$200. Charges for reopening graves, \$6; two bodies to each grave and twelve graves to a plot. Ten hours' notice required for opening a grave, and the vault charge is \$6 for three months. No wooden enclosures are allowed.

B'NAI ABRAHAM CEMETERY,

532 S. ORANGE AVE., NEWARK, N. J.

OFFICE AT CEMETERY.

B'Nai Abraham is a small Jewish cemetery of five acres, located on South Orange Avenue, Newark, and belongs to the congregation of that name on Washington Street, in that city. It is reached by

the South Orange Avenue cars from Market Street, Newark. It was opened in 1866 and contains about 700 bodies. The price of single graves is \$25, ordinary dimensions, while plots providing for eight and twelve graves cost \$200. One body is allowed to each grave, and the cost of reopening a grave is \$3. There is no vault.

B'NAI ISRAEL CEMETERY,

NO. 130 PATERSON STREET, PATERSON, N. J.

OFFICE AT CEMETERY.

A small Jewish cemetery is B'Nai Israel. It is situated on Paterson Street, Paterson, and is reached from New York by the Erie, Delaware, Lackawanna & Western, Susquehanna & Western Railroads, and the Paterson turnpike from Jersey City. It is owned by the B'Nai Israel congregation of Paterson. Several hundred bodies are buried in this cemetery.

B'NAI JACOB CEMETERY,**S. ORANGE AVE., NEWARK, N. J.****OFFICE, 55 BROOME STREET, NEWARK, N. J.**

B'Nai Jacob Cemetery is five acres in extent and adjoins B'Nai Abraham Cemetery, on South Orange Avenue, Newark. It is the property of the local Jewish congregation of that name, and is cut up into single graves. The price of graves is \$25, 2x7 feet, and reopening, \$3. The cemetery was opened in 1890 and since that period about five hundred interments have taken place.

B'NAI SESHURUN CEMETERY,**LAUREL GROVE, PATERSON, N. J.****OFFICE AT CEMETERY.**

B'Nai Seshurun Cemetery is reached the same as Cedar Lawn Cemetery, and is situated at Laurel Grove, Paterson. It is a private Jewish burying ground and is small in extent. The B'Nai Seshurun congregation of Paterson owns the cemetery.

CALVARY CEMETERY,**NEWTOWN, L. I.****OFFICE, 266 MULBERRY ST., NEW YORK.**

Calvary Cemetery is by far the most important burial ground in the vicinity of New York, and, in fact, in the United States in point of interments, extent and the number of monuments and headstones that go to make it a wilderness of rising tombstones. It is the leading Roman Catholic cemetery of the metropolis, and has been such since its opening in August, 1848. It belongs to the diocese of New York, and it is managed by the Board of Trustees of St. Patrick's Cathedral, and they are responsible for its care and maintenance. The cemetery proper contains about 300 acres, although there is considerable additional land which may, as future occasions require, be turned into a burial ground.

The cemetery is about one and one-half miles from New York city, and is reached by ferries from East Tenth Street, East Twenty-third Street, East Thirty-fourth Street, and Roosevelt Street, and from Williamsburgh by the Grand and Houston Street ferries, thence by way of the Grand Street horse-cars.

The grounds at present are laid out in numbered sections. The first ten sections are located in what is known as the Old Calvary,

Columbia Casket Company,

No. 40 BLEECKER STREET,
NEW YORK.

We Give You 

What you want.

When you want it.

As you order it.

As we promise it.



TELEPHONE, No. 722 SPRING.

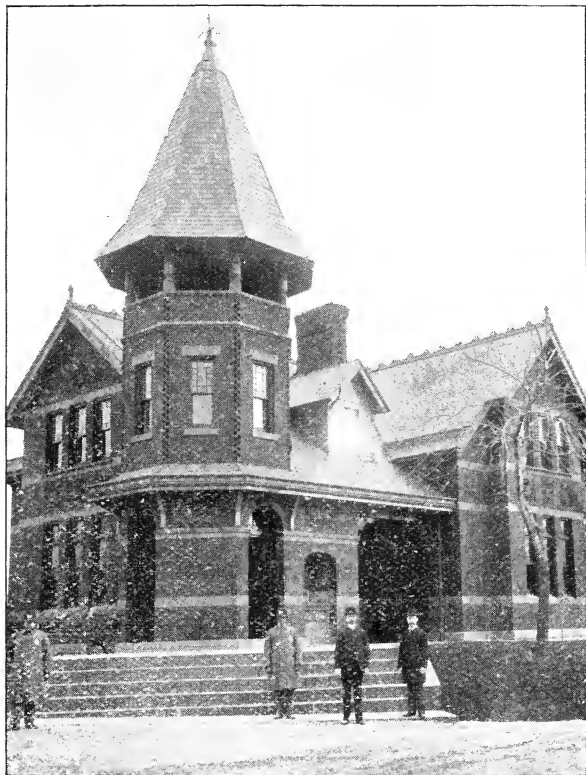
the succeeding Six Sections in the first New Calvary and Sections 17 and 18 are in that part of the cemetery last opened. Plots, half plots and quarter plots with graves make up the plan of sub-division of the grounds; but only the bodies of those persons who die in active Catholic faith and practice are allowed to be buried within its precincts. Since the cemetery was opened about **520,000** bodies have been interred and the considerable number of **18,000** represents the average yearly interments. There is a "poor" or free ground wherein are buried the bodies of the deserving poor of the diocese; but permission even for interment in this part is obtainable only upon the recommendation of a Catholic clergyman. All permits for interment must be obtained, and moneys paid at the New York office **twenty-four** hours in advance of the funeral, and this office is open daily from 8 A. M. to 4.30 P. M., except on Saturdays when it closes at 2 P. M. The office is not open on Sundays. The rules governing the enclosure of plots or graves prohibit the use of wood or wire. Monuments or headstones must be erected on foundations of solid masonry 16 inches thick, sunk to a depth of 9 feet, and must be built of stone, granite or marble. No removal of a body will be allowed between May 1 and Nov. 1.

John Hogan is Superintendent of the cemetery.

PRICES.

Single graves, 2x9x9 feet, \$15 and \$25, according to location, and exclusive of opening.

Plots of 16 graves, \$500 and upwards; fractional plots, \$125 and upwards. Temporary graves, \$7 and \$3. Opening graves, adult, \$7; children 7 to 14 years, \$5, and under 7 years, \$3. Vault



CEMETERY OFFICE, CALVARY CEMETERY.

charges, \$1 and price of opening grave for temporary use only. **THREE BODIES, ADULTS, ARE NOW LIMITED TO A SINGLE GRAVE.**

Sections 9 and 10 of this cemetery are not included in the Newtown tax.

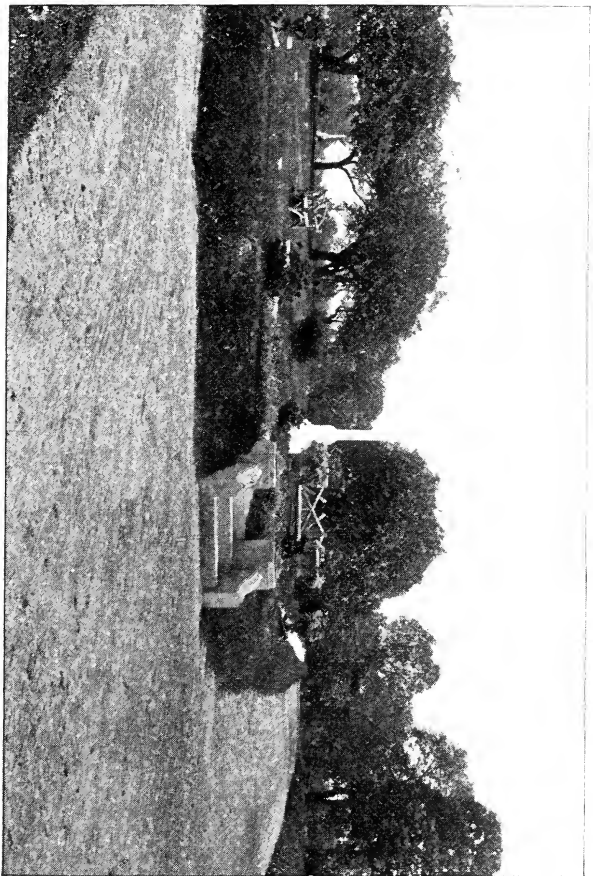
CEDAR GROVE CEMETERY,

CORONA, L. I.

OFFICE, 123 EAST 23D ST., NEW YORK.

Cedar Grove Cemetery was opened in August, 1893, and is located between Corona and Flushing, L. I., five and one-half miles from New York. It is the nearest cemetery to the upper end of the city from the East Ninety-ninth Street Ferry, and is reached also by the Long Island Railroad from East Thirty-fourth Street Ferry, or by the East Twenty-third, Thirty-fourth, Roosevelt, Houston and Grand Street ferries. Four hundred acres comprise the cemetery, and the first year it was opened over one hundred bodies were interred in it. The lawn plan prevails in this cemetery with its accompanying restrictions regarding enclosures of graves, plots and lots, and a few hours' notice only is required to secure the opening of a grave.

The size of a single grave is $3\frac{1}{2} \times 8$ feet; price \$15. Plots, 10x20, 11x10 and 20x20 admitting twelve, twenty-four and forty-



CEDAR AVENUE, CEDAR GROVE CEMETERY.

eight graves, cost from \$40 to \$300. Plots are sold on the installment plan. Vault charges are \$15, but its use is free to a plot owner. The purchase of a plot secures the refunding of the vault tax. Three adult bodies are allowed to each grave. Cost of opening graves is included in purchase price. Reopening is \$5 for adult, and \$3 for child. J. Parker Sloane, President; Charles L. Sicardi, Comptroller; J. S. Ogilvie, Vice-President; J. W. Fraser, Secretary; J. E. McAlpine, Superintendent.

CEDAR LAWN CEMETERY,

PATERSON, N. J.

OFFICE, PATERSON SAVINGS BANK BUILDING.

The Cemetery is located in Paterson, N. J., on the boundary line between Market Street and Lake View, and is one of the leading cemeteries of that city. It is about twenty years old, and the estimated number of interments in it is 20,000. The price of a single grave is \$14, including opening. Plots range from \$70 and upwards, and measure 10x16 feet and upwards. One body is allowed to each grave. The cost of reopening a grave is \$4 adult, and \$3 child. Children's graves are \$11, including opening. There is a vault charge of \$1. S. H. Hammersley is Superintendent, and twelve hours' notice is required for opening graves.

CHEVRA B'NAI SHOLAU CEMETERY,**NEWTOWN, L. I.****OFFICE AT CEMETERY.**

This is one of a number of small Jewish cemeteries in Newtown, L. I., and was opened two years ago. It is reached from Long Island City the same as Maepelah Cemetery.

CITY CEMETERY OF NEW YORK,**HART'S ISLAND, WESTCHESTER CO., N. Y.****OFFICE, 66 3D AVE., NEW YORK.**

The City Cemetery of New York, or Potter's Field, is located on Hart's Island, on Long Island Sound, nearly opposite New Rochelle, and it is under the control of the New York City Department of Charities and Correction. The cemetery was opened April 20, 1869, and contains about 20 acres and receives its bodies from the city morgue. It is a cemetery of unclaimed dead. There are 150 trenches divided into graves, and three bodies are buried in each grave. It is estimated that there are about 90,000 bodies buried, and the average number interred yearly is about 5,000. The burials take place

every day except Sunday, and in the winter season on Tuesdays and Fridays only. A body can be secured from the City Cemetery by giving 24 hours' notice to the Department of Charities, and between May and November all exhumed bodies are placed in metallic cases hermetically sealed. John Bapp is keeper of the City Cemetery. The City Cemetery is reached by boat from the foot of East Twenty-sixth Street, which leaves daily. All removals are made only by permit from Board of Health of New York City.

CITY CEMETERY OF BROOKLYN,

FLATBUSH, L. I.

OFFICE, ALMSHOUSE, FLATBUSH, L. I.

The Potter's Field of Brooklyn is located in the town of Flatbush, near the County Buildings, and is nearly five miles from the Brooklyn Bridge. The unclaimed and pauper dead of Kings County are buried in it, and it is believed that there are several thousand bodies already interred in its graves. It is reached by way of Flatbush Avenue from Fulton Ferry, and Nostrand Avenue from Grand and Roosevelt Street ferries, New York.

CITY CEMETERY OF JERSEY CITY AND HOBOKEN.

SNAKE HILL, HUDSON CO., N. J.

OFFICE COUNTY BUILDINGS, SNAKE HILL.

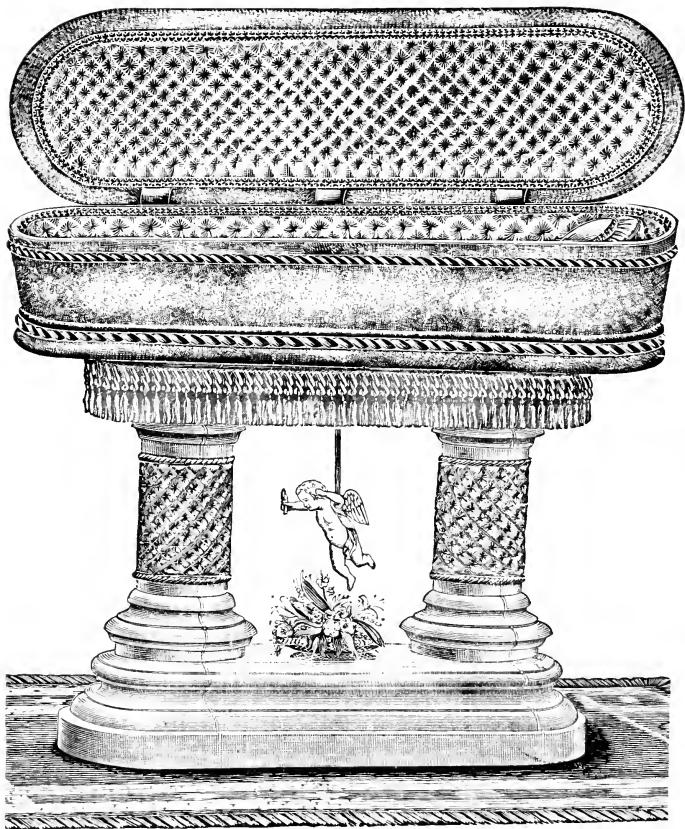
The Hudson County City Cemetery is located at Snake Hill, six miles from Christopher and Barclay Street ferries, Hoboken. It is reached by the trains of the Delaware, Lackawanna & Western Railroad to Secaucus Station, and by the turnpike from Jersey City to the former place.

CITY CEMETERY OF NEWARK,

WAVERLY, N. J.

OFFICE, OVERSEER OF THE POOR OF NEWARK.

About sixteen acres of ground comprise this Cemetery of the Newark pauper dead, and is situated at Waverly, just outside of the former city, on the line of the Pennsylvania Railroad.



NATIONAL CASKET COMPANY,
27 GREAT JONES STREET, NEW YORK CITY.
108 LIVINGSTON STREET, BROOKLYN, N. Y.
HOBOKEN, NEW JERSEY.

CITY CEMETERY OF PATERSON,**NORTH PATERSON, N. J.****OFFICE, POORHOUSE, NORTH PATERSON, N. J.**

This Cemetery is situated back of the County Poorhouse in North Paterson, N. J., and the bodies of those persons who died as paupers in Paterson are buried in it.

CLINTON CEMETERY,**UNION AVENUE, IRVINGTON, N. J.****OFFICE, SPRINGFIELD AVE. AND CENTER ST., IRVINGTON, N. J.**

Clinton Cemetery is one of the oldest in the vicinity of Newark, N. J., and comprises eight acres. It was opened February 28, 1844, and there have been 2,500 bodies interred. It is reached from Newark by the Clinton and Springfield Avenue cars. Among the prominent plot owners are : ex-Congressman Amos J. Cummings of New York, and ex-Mayor Haynes of Newark.

The price of single graves, 2.8x7x6 feet is \$13. Plots 13x21 feet \$75. twelve graves ; cost of reopening graves \$5, and two bodies to each grave. Twenty-four hours' notice for opening. Ira Meeker, President ; J. H. Mortland, Secretary, and J. H. Van Cleve, Treasurer.

CONSTABLE HOOK CEMETERY,**CONSTABLE HOOK, BAYONNE CITY, N. J.****OFFICE AT THE CEMETERY.**

This Cemetery is about thirty years old, and is located at Constable Hook, Bayonne City, N. J., seven miles from the Pennsylvania Railroad Jersey City ferries. The estimated number of bodies buried in it is 7,000, and the average yearly number of interments is fifty. Price of adult graves 2x 8x6 feet is \$12, child's, \$5. Reopening adult grave \$5, child's \$3. The price of plots containing eight graves is \$50 and upwards. Twenty-four hours' notice for opening grave. N. D. Lockwood, Undertaker, Avenue D and Sixth Street, Bayonne City, is Superintendent.

CYPRESS HILLS CEMETERY,**CYPRESS HILLS, BROOKLYN, N. Y.****OFFICE, 124 BOWERY, NEW YORK, AND AT THE CEMETERY.**

Cypress Hills is one of the leading and most beautiful cemeteries of New York, and one of the oldest in the modern class, having been opened in November, 1848. About 500 acres comprise its extent and it is estimated that it contains about 138,000 bodies. The

average number of interments annually is 3,000. The cemetery is reached from New York by the Grand Street, Roosevelt Street, and Twenty-third Street ferries to Broadway, Williamsburgh; thence by the Brooklyn elevated road to Ridgewood, whence cars run to the cemetery; trains of Atlantic Avenue, Brooklyn Rapid Transit, cars of the Long Island Railroad to Crescent Street, or from the Brooklyn Bridge and Fulton, Wall, and South ferries, to Jamaica Avenue, thence by electric surface cars to the main entrance. The distance from New York is about seven miles. The grounds are laid out into sections, lots, plots, and graves, and are most picturesque in their geographical character, and handsome vaults and classic monuments make the cemetery a most attractive spot. Scores of benevolent, social, ecclesiastical, and humane societies own plots there, and the best of care and attention are given to their maintenance. James Rodwell is President of the cemetery; F. H. Way, Treasurer; A. M. Fraser, Secretary, and R. F. Butt, superintendent.

PRICES.

Prices of lots vary from \$60 to \$600 each, depending upon size and location, and measure 16x25 feet and upwards. Single graves (including the charge for the first opening) are: For adults, \$12.00, and \$20.00; for children under ten years of age, \$8.50. Subsequent interments may be made subject to the usual charge for reopening, \$4.00 and \$5.00. Graves for adults, usual depth six feet, \$5.00; seven feet, \$6.00; eight feet, \$7.00; nine feet, \$8.00; ten feet, 9.00. Graves for children under ten years, usual depth six feet, \$4.00; eight feet, \$5.00; ten feet, \$6.00; vaults underground, \$5.00; above ground, \$2.00.

Charge for receiving tomb for adults is \$15.00; children under ten years of age, \$10.00. If removed to any lot or grave in the cemetery within thirty days, the whole amount deposited will be returned except \$1.00 for transportation. If the remains are removed from the cemetery, nothing will be returned. Orders for interments, at the New York office, from 9 A. M. to 5 P. M. To avoid possible detention at the grave, orders should be given the day previous.

Two and three bodies are allowed to a single grave, and 15 graves to a plot.

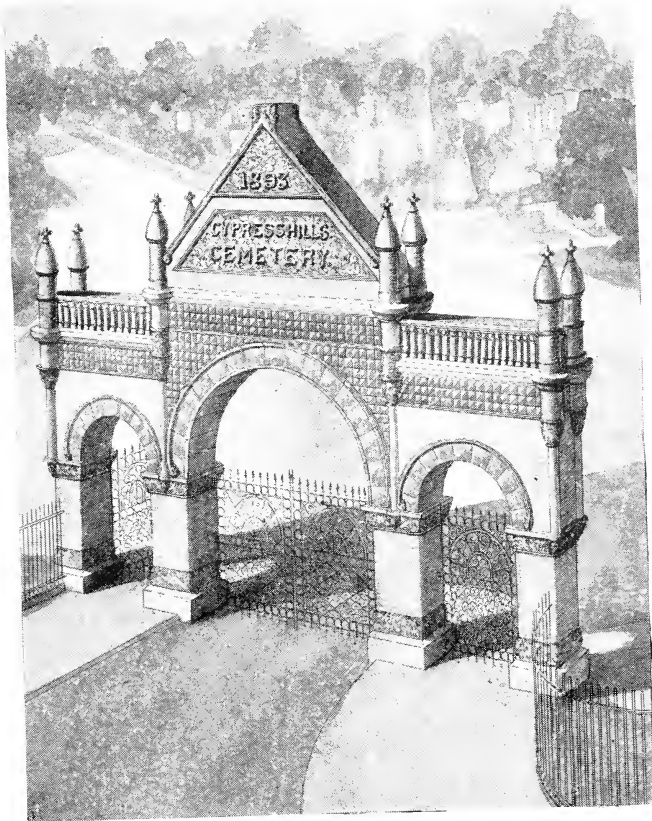
Sections 1, 2, 4, and 5, and parts of 3, 7, 14, and 18 are exempt from the Newtown tax.

DUTCH REFORMED CEMETERY,

TOTAWA AVE., PATERSON, N. J.

OFFICE ON GROUNDS.

This old Cemetery is located on Totawa Avenue, Paterson, and is used only by the members of the Dutch Reformed Church of that city, who own plots in it. Graves or plots are not sold, and the price of opening a grave is \$4. The cemetery is reached from New York by the Erie, Delaware, Lackawanna and Western, and New York, Susquehanna and Western Railroads. Rev. Theodore Wheeler, Pastor of the Second Reformed Church of Paterson, is President of the Trustees of the Cemetery. Estimated number of interments 2,000.



MAIN ENTRANCE CYPRESS HILLS CEMETERY.

EPISCOPAL CEMETERY,**PATERSON, N. J.****OFFICE, 124 OAK STREET, PATERSON, N. J.**

This Cemetery is located on Oak Street, Paterson, N. J., is very old, and like the Dutch Reformed Cemetery in that city, it is the private burying ground for members of the local Episcopal Church. The price for opening a grave is \$4.

EVERGREENS CEMETERY,**BROOKLYN, N. Y.****OFFICE AT CEMETERY, BUSHWICK AVE. AND CONWAY ST.****TELEPHONE CALL, 18 EAST NEW YORK.**

Evergreens Cemetery is situated in Brooklyn, partly in Kings County, and partly in Queens County, and its main entrance is near the terminus of the Brooklyn Elevated Road, on Bushwick Avenue. It contains 300 acres, and was opened for burial purposes in 1851. It is regarded as a perfect rural cemetery by reason of its picturesque seclusion, and the natural beauties of its woods, knolls, dells and lakelets, and over \$500,000 have been expended in bringing it to its present state of perfection. It was originally organized under the Cemetery Act of 1847, but was reorganized under a special new

act of the New York Legislature in 1870. It has about 140,000 bodies interred, and there is a yearly average of burials amounting to 6,000. There are many fine monuments in the cemetery, and the Actors' Fund of America has a plot of considerable size. Twenty thousand bodies of sailors are buried in this cemetery, the different nationalities being represented by stone monoliths. The cemetery is reached by the Broadway (Brooklyn) ferries, thence via the Elevated Road to Ridgewood. The officers are: Charles G. Bennett, President; Charles C. Cummings, Vice-President; John W. Grace, Treasurer, and Charles Pfeiffer, Superintendent.

PRICES.

Single graves, adults, \$16, \$20 and \$22, including opening, and according to location; children under ten years, \$12.50 and \$15. A full plot contains 400 superficial feet, or 16x25 feet, admitting about sixteen adult graves, and the prices vary from \$300 to \$1,600, according to location. Lots 10x20 feet, which will admit of eight graves, from \$150 to \$400; lots 12.6x8 feet, with four adult graves, \$75 to \$250. Opening graves costs for child, \$4. Adult coffin \$4, and adult box \$5. Single temporary graves \$6 for adult, and \$3 for child. Vault charges are \$20 for six months for an adult, and \$15 for a child under ten years, and there is a rebate of \$15 and \$10 if a body is removed from the vault within three and six months. Three adult bodies are allowed to a single grave. Those parts of the cemetery known as Bethel Slope, Mt Pisgah, Mt. Hebron, Solitude, Mt. Magnolia, Cedar Vale, North Mead, Mt. Leir, Mt. Herson, Mt. Taber, Shiloh, Evergreen Hedge, Pleasant Hill, Mt. Grace, and the Ecclesiastical plots are included in the Newtown tax.

EVERGREEN CEMETERY,**ELIZABETH, N. J.****OFFICE ON GROUNDS, UPPER ROAD TO NEWARK.**

Evergreen Cemetery was opened in 1853, and it is estimated that there are 15,000 bodies buried in it. It is a cemetery of about 100 acres, and the average number of interments per year is about 700. This cemetery is reached from Newark by Freylinghuysen Avenue, and is divided into sections, lots, and graves. Single graves, 3.6 x 9x6 feet, are \$5, \$7, \$10, and \$14; and opening for adult \$5, and child \$3. There is a vault charge of \$15, which is refunded less \$1, when a plot is purchased. One body is allowed to each grave, and eight hours' notice is required to secure an opening. Charles Russ is President; E. B. Woodruff, Vice-President; Edward S. Atwater, Secretary and Treasurer, and H. H. Cooke, Superintendent.

EVERGREEN CEMETERY,**NEW BRUNSWICK, N. J.****OFFICE, 88 SCHUSEMAN STREET, NEW BRUNSWICK, N. J.**

Eight acres comprise this cemetery, which is located at the head of Commercial Avenue, just outside of the city limits of New Brunswick, N. J. It was founded in December, 1886, and opened the

following year. The total number of interments have been about 300. The cemetery is reached from New York by the Pennsylvania Railroad, and Central Railroad of New Jersey to New Brunswick, thence via Commercial Avenue.

The size of single graves is 2.6x8x6 feet, and of plots, 12x17, 12x21, 16x21, 18x21, and 21x21 feet. The single graves cost \$6, and plots from \$50 to \$200, according to size and location. There are from twelve to twenty-one graves to each plot. Reopening grave for adult is \$3, and child, \$2. One body to a single grave. A notice of four hours will secure the reopening of a grave. Vault charges are \$12, of which \$10 is refunded when a plot is purchased. No wood enclosure is allowed in this cemetery.

Fletcher Felter is President, Dennis Vanderbilt, Vice-President; Benjamin Conover, Secretary, and Bornt Stevenson, Treasurer and Superintendent.

FAIRLAWN CEMETERY,

PATERSON, N. J.

SEE PATERSON CEMETERY.

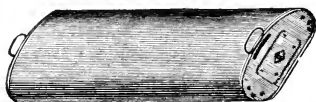
— — — — — USE — — — — —

LEHMAN'S HEATERS

FOR YOUR

Carriages and Sleighs.

They will GIVE YOUR PATRONS COMFORT and INCREASE YOUR TRADE.



55,000 NOW IN USE.

LEHMAN BROS.,

14 BOND ST.. NEW YORK.

OWEN LEONARD & SON, Jackson Square Livery Stable,

130 GREENWICH AVE., NEW YORK.

Telephone Call, 303 18th Street.

Latest Style Hearses and Coaches
TO LET.

TELEGRAPHIC ORDERS SOLICITED. ESTABLISHED 40 YEARS.

FAIRMOUNT CEMETERY,**SOUTH ORANGE AVENUE, NEWARK, N. J.****OFFICE AT CEMETERY, ENTRANCE 489 S. ORANGE AVE.**

Fairmount is one of the leading, as well as one of the most beautiful, cemeteries of the city of Newark, N. J., and comprises one hundred acres, 60 per cent. of which is laid out in sections and lots. It is reached from any part of Newark by South Orange Avenue by carriage or by cars under the transfer system, and the subdivision of the grounds include family burial plots, single grave plots, society plots, and soldiers' plots. About 40 per cent. of the interments are made in single grave plots, comprising plots for adults, youth, and children. The cemetery was incorporated in 1855, and the first interment was made the same year—that of Lewis J. Pierson, in lot 9, Section E. There have been about 28,800 interments, and the average number per annum is about 1,300. The lawn plan, with its prohibition of enclosures, has been adopted by this cemetery.

Single graves, 3x9x6 ft. for adult costs \$18; youth's, 5x2x6 ft., \$14; Children, 4x1.6x6 ft., \$10. Lots vary in size from 9x20 ft. to 12x20 ft., 15x20 ft., and 18x20 ft., and cost \$150, \$200, \$250 and \$300, or from 75 cents to \$1.20 per square foot. Reopening adult grave costs \$5; youth's \$4, and child's \$3. The number of graves to a lot ranges from six to twenty-five. One body is allowed to a single grave, except in the case of a child, which may be buried with

a parent. Twenty-four hours' notice required to reopen a grave. The sum of \$25 is charged for the use of the receiving tomb for an adult, and \$20 for a child under twelve years; but \$17 are refunded in case of an adult, and \$15 for a child when a plot is purchased in the cemetery.

William Ward is President of the cemetery, John J. Henry, Secretary; Horace T. Brunley, Treasurer; Charles Nichols, Superintendent, and Sylvester C. Hulbert, Assistant Superintendent.

FAIRVIEW CEMETERY,

NEAR CASTLETON CORNERS, STATEN ISLAND, N. Y.

OFFICE, JOHN STEERS, WEST NEW BRIGHTON, S. I.

Fairview Cemetery is situated on the Richmond Turnpike, near Castleton Corners, Staten Island, and commands an extensive view of the surrounding country. It is reached from New York by the Staten Island ferry to St. George, thence via the Richmond Turnpike. The distance is about five miles. The cemetery is about a dozen years old and comprises twelve acres. There have been about 500 interments and the average yearly interments number about fifty. Single graves measure 2.6x8x7 ft. and 3x8x7 ft. and cost \$10, and \$12. Plots 10x17 ft. are sold for \$35, and 12x23 ft. from \$75 to \$100. There are from six to twelve graves to a lot, and the cost of reopening a grave is \$5. Three bodies allowed to single graves and

in lots two bodies to each grave. The cemetery has no vault. Twenty-four hours' notice required to reopen graves. William A. Anderson, President; W. L. Sexton, Secretary; W. J. Ladd, Treasurer, and John Steers, Superintendent.

FLATLANDS CEMETERY,

FLATLANDS, L. I.

OFFICE, N. W. BROWN, UNDERTAKER,

FLATBUSH AVE., COR. NOSTRAND AVE., FLATLANDS, L. I.

Although Flatlands Cemetery is one of the smallest in the vicinity of New York, it is one of the oldest, burials having taken place within its limits as far back as 1686. It is generally supposed to have been an Indian burying ground. It is three acres in extent, and the estimated number of interments that have taken place is 2,000. There are about 20 interments per year. This cemetery is reached by the Brooklyn Bridge and Fulton ferry, thence by way of Flatbush Avenue to the cemetery entrance. The size of single graves is 3x9x6 ft., and the cost \$10; reopening, \$5, and for less than 4 feet \$4. The lots are 12x18 ft. with eight graves: but they are not sold. Two bodies to a single grave. Twenty-four hours' notice for reopening grave and \$1 extra fee is charged for shorter notice. There is no vault. The town of Flatlands is the owner of the cemetery, and Nicholas W. Brown is Superintendent.

FLOWER HILL CEMETERY,
BERGENWOOD AVENUE, NORTH BERGEN, N. J.

OFFICE ON GROUNDS.

TELEPHONE CALL, 113 B HOBOKEN.

This cemetery comprises about twenty acres and was opened in 1884. It is situated on Bergenwood Avenue, on the New Hudson County Road, North Bergen N. J., and is reached by West Forty-second Street and Jay Street ferries to Weehawken, one and one-half miles thence; also by the Christopher Street and Barclay Street ferries to Hoboken—four miles distant. The average number of interments per year is 2,000. Price of single graves, 2x7x6 ft., is \$20; reopening grave, \$5. Plots, \$75 and upwards. Two bodies to each grave, and twenty-four hours' notice for reopening of grave. There is no charge for temporary use of vault; but \$10 is charged and \$2 per month for a long period.

FLUSHING CEMETERY,

FLUSHING, L. I.

OFFICE, 20 MAIN STREET, FLUSHING, L. I.

Flushing Cemetery is one of the best kept cemeteries in the vicinity of the metropolis, and is located one and one-half miles southeast of the village of Flushing, L. I. It comprises seventy-five

JOHN H. MOWEN, Pres. WM. J. NOBLE, Vice-Pres. CHARLES H. MAGIE, Sec'y.

NEW YORK AND BROOKLYN CASKET CO.

○————Manufacturers of————○

Caskets, Robes, Linings,

.. .. AND

Undertakers' Supplies.

. New York City Office and Salesroom,

No. 13 BOND STREET,

J. L. SEXTON, MANAGER. TELEPHONE CALL, 22 SPRING.

FACTORY AND SALESROOM:

BROOKLYN, N. Y.

34-38 South Ninth Street and 33-39 South 10th Street.

TELEPHONE CALLS:

36 WILLIAMSBURGH—2 WILLIAMSBURGH.

acres and is reached by the Long Island Railroad from Hunters' Point, Jackson Avenue, Long Island City; East Ninety-second street ferry to Astoria, and East Ninety-ninth Street ferry to College Point. The cemetery was opened in 1853 and the number of interments since that time have been about 6,000. The yearly average is 300. Single graves 3x8x6 cost \$10; child's, under ten years, \$6; plots ranging 100 to 600 square feet, 50 cents to 60 cents per foot, including perpetual care. Reopening graves: \$5 for adult; children, under ten years, \$3; opening vault under ground, \$5. Vault charges, \$15 for adult; children under ten years, \$10; if body is removed there are refunds of \$5 and \$2.50. Iron or wooden enclosures for graves or plots are not allowed in this cemetery. George Schlesinger, President; George Pable, Secretary, and W. T. James, Treasurer and Superintendent.

FOUNTAIN CEMETERY,

WEST NEW BRIGHTON, S. I.

OFFICE AT CEMETERY.

Fountain Cemetery is one of the small cemeteries on Staten Island, and is located on the Richmond Terrace, West New Brighton. It is reached by the Staten Island ferry to St. George. There are no plots in this cemetery. Price of single graves: adult, \$10 and \$12; children, \$4 and \$8, according to location. Charges for reopening graves: adult, \$5; children, \$3.50. A. D. Fountain is Manager.

FRIENDLY HAND CEMETERY,
BROOKLYN, N. Y.
OFFICE AT CEMETERY.

This cemetery is one of a series of small ones located near Cypress Hills Cemetery and is reached by the same routes as the latter.

FRIENDS CEMETERY,
PROSPECT PARK, BROOKLYN, N. Y.
OFFICE ON GROUNDS.

Sixteen acres comprise Friends Cemetery which is located in Prospect Park, Fifteenth Street and Eleventh Avenue, South Brooklyn, about four miles from the Brooklyn Bridge. It is a Quaker burying ground and is reached from Fulton Street, Brooklyn, to Flatbush Avenue to Ninth Avenue, and through the latter thoroughfare to the cemetery entrance. The cemetery was founded in 1840 and opened in 1846. About 1,600 bodies have been interred, and there are about 30 interments per year. Price of single graves, 2.4x8x5.6 feet \$10. The plots, which are not sold, admit of eight and ten graves. Cost of opening a grave is \$6. and thirty-six hours notice is required for same. Two bodies, as a rule, are allowed to a single grave. Vault charges, for temporary use only, \$3. The cemetery is the property of the Monthly Meeting of the Society of Friends of New York and Brooklyn. James C. Stringham, Superintendent: residence, 368 Monroe Street, Brooklyn.

GREENWOOD CEMETERY,
GOWANUS HEIGHTS, SOUTH BROOKLYN, N. Y.
OFFICE, 257 BROADWAY, N. Y.

Greenwood Cemetery was chartered April 18, 1838, was opened in 1840, and the first interment occurred September 5, of the latter year. It comprises 475 acres, and the art of the landscape artist has been exhausted in making this cemetery one of the most beautiful in the world. For years it has been the leading unsectarian burying ground of the cities of New York and Brooklyn, and its miniature lakes, hills and dells that enliven its natural beauty have long caused it to be a point of attraction for visitors to the metropolis. Greenwood's fame is international. Its monuments are numerous, costly and beautiful, and within its carefully guarded borders lie the dead of some of the most influential, wealthy and oldest residents of New York. Greenwood Cemetery is a corporation, the sole object of which is to maintain and promote the beauty of the cemetery. Its income is expended to that end, and the present state of perfection and surpassing attractiveness of the place bear testimony to the judicial and successful management of the property. It is estimated that there are about 285,000 bodies buried in the cemetery. The cemetery is about four miles from Brooklyn Bridge, and two miles from Hamilton Ferry, South Brooklyn. It is reached by the cars from Hamilton, South, Fulton, Catherine and Wall Street ferries, the Brooklyn Bridge, and the Grand, Houston and Roosevelt Street ferries from Williamsburgh. Some of the prominent persons buried in it are : DeWitt Clinton, James Gordon Bennett, Henry J. Ray-

mond, Horace Greely, Lester Wallack, Peter Cooper, Gen. T. S. Dakin, Gen. O. McK. Mitchell, Gen. Geo. Cullom, Maj.-Gen. H. W. Halleck, Henry Ward Beecher, Gen. Henry W. Slocum, Henry Bergh and ex-Gov. Leon Abbett of New Jersey.

PRICES.

SINGLE GRAVES (including the charge for the first opening) may be procured as follows :

For adults..... \$31.00

For children, under ten years of age..... 21.00

Subsequent interments may be made subject to usual charge for reopening.

CHARGES FOR OPENING GRAVES AND VAULTS.

Graves for adults, usual depth, six feet, \$6.00 ; seven feet, \$6.50 ; eight feet, \$7.00 ; nine feet, \$7.50 ; ten feet, \$8.50.

Graves for boxes exceeding twenty-six inches in width, will be \$1 extra.

Graves for children, under ten years, usual depth, six feet, \$5 ; eight feet, \$5.50 ; ten feet, \$6.50.

Vaults under ground, \$5 ; vaults in side hills, and above ground, \$4.

RECEIVING TOMB, CHARGES AND CONDITIONS.

For adults, \$35 ; for children, under ten years of age, \$25.

If removed to any lot or grave in the cemetery within three months, \$25 will be returned for adults, and \$17.50 for children.

If within six months, \$15 will be returned for adults, and \$10 for children.

If removed *from* the cemetery within six months, \$10 will be returned for adults, and \$7.50 for children.

If not removed within six months, nothing will be returned. If suffered to remain a longer period. it will be subject to the follow-

 ERWIN M. JENNINGS.
 

 EDWARD A. JENNINGS.
 

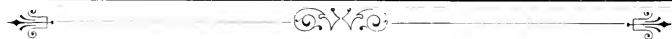
JENNINGS BROS.,

BRIDGEPORT, CONN.

—: MANUFACTURERS OF FINE LINES OF :—



CASKET HARDWARE



••• COMPRISING •••

Handles, Plates, Etc.



We will interest you if you **SECURE OUR PRICES**
AND DISCOUNTS before placing your orders.

ing charges : for three months, adults, \$6 ; children, \$3 ; for six months, adults, \$12 ; children, \$6. Charges for retentions must be paid in advance, at the office in New York, or at the cemetery. After thirty days default of payment of retention fee, bodies may be removed by said cemetery at its convenience, and interred in the lot reserved for that purpose. Bodies will not be allowed to remain in the tomb longer than one year, unless special arrangements are made with the cemetery authorities.

CATACOMBS FOR PERMANENT USE may be procured in the Mausoleum, in Vine-dell, for \$100 each.

LOTS.

Each full lot contains 378 square feet.

The form depends upon the peculiar surface of the ground and the character of the improvements contemplated. It may be square, oblong, circular, oval or irregular, according to circumstances. The ordinary form is 14 feet by 27 feet, which *will admit of fifteen adult graves*, in three rows of five graves each.

The prices of full lots vary, generally from \$600 to \$1,200 each, depending upon the location.

Small lots will be sold as follows :

Lots 9 feet by 10 feet 6 inches, which *will admit of three adult graves*, at \$220 and upwards, according to location.

Lots 12 feet by 10 feet 6 inches, which *will admit of four adult graves*, at \$280 and upwards, according to location.

Lots 10 feet by 19 feet, which *will admit of six adult graves*, at \$330 and upwards, according to location.

ORDERS FOR INTERMENTS are received until 10:30 A. M., for afternoon of same day. If received after that hour for same day, one dollar extra will be charged. To avoid possible detention at the grave, orders should be given the day previous.

The size of the burial case governs the number of interments to single graves, but the usual number is from four to six. The office

of the cemetery is open from 9 A. M. to 5 P. M., daily except Saturday, when it closes at 3 P. M. It is not open on Sundays. The cemetery is open from sunrise to sunset. There is a number of regulations bearing on the enclosure of graves and plots and erection of headstones, etc. The officers of the corporation are Jasper W. Gilbert, President; John W. C. Leveridge, Vice-President, and Charles M. Perry, Comptroller and Secretary.

HAZELWOOD CEMETERY,

RAHWAY, N. J.

OFFICE, RAHWAY SAVINGS BANK.

This cemetery is located in Rahway, N. J., one and three-quarter miles from the latter station of the Pennsylvania Railroad on the road to Plainfield, N. J. It was opened in 1860 and comprises about 35 acres. There are about 1,300 bodies interred, and the average annual interments are about fifty. The price of single graves is \$8, including opening. Plots 13x26, \$20 and upwards. Reopening grave, \$5; one body to a single grave. Vault charges are, opening and closing, \$2, and \$3 per month.

HOLY CROSS CEMETERY,

FLATBUSH, L. I.

**OFFICE, ST. JAMES R. C. CATHEDRAL, JAY AND CHAPEL STS.,
BROOKLYN.**

Holy Cross Cemetery is located in the town of Flatbush, L. I., about six miles from Fulton ferry, and embraces 140 acres. It be-

longs to the Roman Catholic Diocese of Brooklyn, and received its first interment in July, 1849. It is reached from Fulton ferry and the Brooklyn Bridge to Flatbush Avenue, thence to cemetery; also by Williamsburgh ferries and Nostrand Avenue cars. The estimated number of interments in this cemetery is 100,000, and the average per year is 3,500. Size of single graves is 2x8x8 feet and cost \$12; temporary graves, adult, \$7, and child \$3.62. Plots 16x16 ft., \$100, and admit of 16 graves. Reopening graves cost, adult, \$5.12, child, \$3.12. Four boxes to a single grave, and twenty-four hours' notice required for reopening. Vault charge is \$1, and no body is kept longer than one week. No wooden enclosure of graves or plots allowed. John T. Hamilton is Superintendent.

HOBOKEN CEMETERY,

NEW DURHAM, N. J.

OFFICE, 130 WASHINGTON STREET, HOBOKEN, N. J.

Hoboken Cemetery is located at New Durham, N. J., two and a half miles from Weehawken ferry, and four miles from Barclay Street and Christopher Street ferries, Hoboken. It is reached by the same routes as Flower Hill Cemetery, and practically the same prices prevail in this cemetery as in the latter.

HOLY NAME CEMETERY,
WEST SIDE AVENUE, JERSEY CITY, N. J.
OFFICE AT CEMETERY.

The Cemetery of the Holy Name, otherwise known as the Hudson County Catholic Cemetery, was founded in 1867, and the first interment was made in April of that year. It comprises 100 acres which are divided into sections, lots, plots and graves. The estimated number of interments is 36,000, and the average number per year is 3,600. This cemetery is reached from New York by the Pennsylvania Railroad ferries to Jersey City to Montgomery Street, thence direct to the cemetery, or by the Pennsylvania Railroad to Marion Station, Jersey City. A most liberal, progressive and intelligent policy characterizes the management of this cemetery, and to this end the lawn plan has been adopted in all its severity for its new portion, distinctly precluding all deviation from its principles. On single graves in the new portion of the cemetery no headstone is allowed exceeding four feet in height from the grade. No slabs are permitted, and all monuments must have eight feet foundation, and erected in the centre of a plot having the four sides equally exposed. Price of single graves 2.3x7x7 ft., \$10, \$15, \$20 and \$25, according to location; plots 18x20 ft., \$400 to \$800, according to location; lots 7x9 ft., \$100, \$125 and \$150. Three graves to a lot, and sixteen graves to a plot. Two adult bodies to a single grave, which may be sunk deeper at 50 cents per foot, and charge of reopening graves, adult, \$5, child \$3. Twenty-four hours' notice required to reopen a grave. Vault charges \$1 per month, and price of opening a grave.

WHEN THE BEST THING

costs a great deal **more** than any other, we can understand why it is that people sometimes use the poorer grades.

When the best costs **THE SAME** as the others, it would seem that everybody would use it without question.

When the best **COSTS LESS** than the next best, what are we to say?

Perhaps you doubt that the

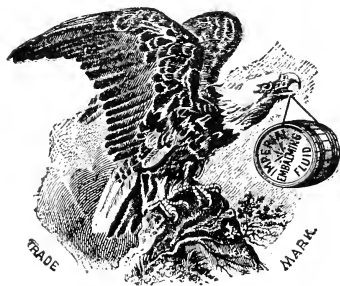
“IMPERIAL EMBALMING FLUID”

really is the best fluid in the world. May be that's the reason you don't buy it.

There's only one way we can prove to you that it **IS THE BEST**. That's to have you try it. We'll send you a trial keg, and if it isn't

better than any you've used before, send back what's left and we'll send you a receipt in full.

That's tolerably fair, isn't it?



Hurd, Gray & Co.

Syracuse, N. Y.

Right Rev. Bishop Wigger is President of the cemetery; Mgr. DeConcilio, Treasurer; Rev. B. Henry Ter Woert, Secretary and Manager.

HOLY SEPULCHRE CEMETERY,

EAST ORANGE, N. J.

OFFICE, 107 WASHINGTON STREET, NEWARK, N. J.

The Cemetery of the Holy Sepulchre is located in East Orange, N. J., and is reached from Newark by the South Orange Avenue cars to Grove Street. Between sixty and seventy acres comprise the extent of the cemetery which is divided into sections alphabetically arranged, and designated by names of saints. The first interment was in 1857. The estimated number of interments is 40,000, and about 1,500 bodies are interred yearly. The family plot of Archbishop Corrigan of New York is located in this cemetery, as is also that of U. S. Senator Smith of New Jersey. The size of single graves is 2x7x8 ft., and cost \$7 exclusive of opening. Lots 9x16 ft. containing six graves \$50 to \$100, according to location. A plot contains twenty-four graves. Price of opening graves, adult and children, \$5, \$4 and \$3. Two adult or three children's bodies to a single grave. Twenty-four hours' notice required to reopen a grave.

This cemetery is owned by the Roman Catholic diocese of Newark, the head of which is Rt. Rev. Bishop Wigger. Michael Rowe is Superintendent.

HOLY SEPULCHRE CEMETERY,**NEW ROCHELLE, N. Y.****OFFICE AT CEMETERY.**

The Cemetery of the Holy Sepulchre is situated in New Rochelle, N. Y., and is reached by the New York, New Haven & Hartford Railroad from this city. It comprises about 200 acres and is only a few years old. Single graves 2x8x6 ft. cost \$13, including opening. Plots of four graves, \$30, and reopening \$5. Three adult bodies to a single grave. There are about 100 bodies interred annually in this cemetery.

HOLY TRINITY CEMETERY,**CENTRAL AVENUE, EAST NEW YORK, L. I.****OFFICE ON GROUNDS.**

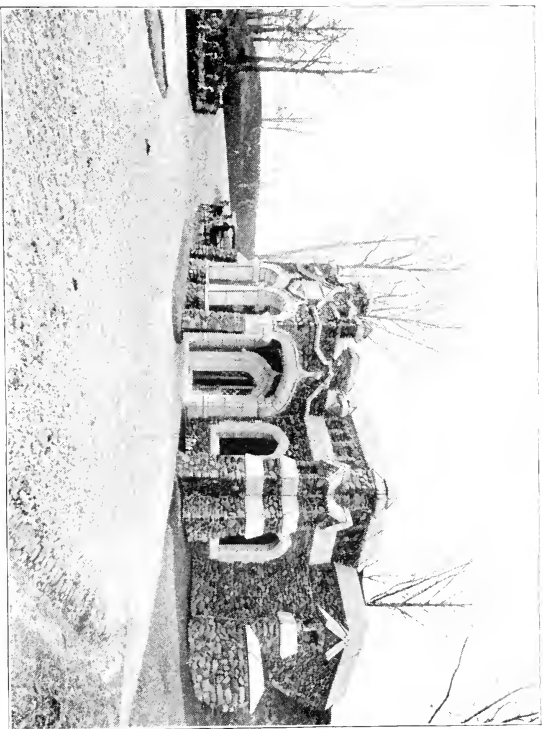
The Cemetery of the Holy Trinity or Raffiner Cemetery, comprises about thirty acres and was opened in 1852. It is situated on Central Avenue, East New York, was known for years as the "Catholic branch of the Evergreens Cemetery," and is owned by the German Catholic Church of the Holy Trinity on Montrose Avenue, Brooklyn. It is four miles from Grand and Roosevelt Street ferries to Williamsburgh, and is reached also by these routes by the cars from Fulton, Wall, and South ferries to East New York.

JERSEY CITY CEMETERY,**NEWARK AVENUE, JERSEY CITY, N. J.****OFFICE AT ENTRANCE, 437 NEWARK AVENUE.**

Jersey City Cemetery comprises five and one-half acres, is situated on Newark Avenue, Jersey City, and is reached by Newark Avenue from the Pennsylvania Railroad, Jersey City, ferries. The cemetery was opened in 1831, and it is estimated that 15,000 bodies have been buried therein. The average number of interments per year is 250. The price of single graves is \$25; plots, \$350, allowing twelve graves. Reopening graves, \$5 for adult, and \$4 for a child under ten years. Vault charges: adult, \$10; child under ten years, \$8, with rebates for removals. Thomas B. Kissam, is President; William Hanks, Treasurer, and John T. Mellor, Secretary.

KENSICO CEMETERY,**KENSICO, N. Y.****OFFICE, 16 EAST 42d STREET, N. Y.**

Kensico Cemetery is regarded by many as the coming necropolis of the City of New York. It is most picturesquely situated beyond Kensico, the first station north of White Plains, on the New York and Harlem Railroad, and within very few minutes ride from the city. The distance is fifteen miles. The chief characteristic of the



EXTERIOR RECEIVING TOMB, KENSICO CEMETERY.

grounds is their elevation, and from plateaus ranging from 300 to 525 feet splendid views of Long Island Sound are obtained. The cemetery is reached by the Harlem Division of the New York Central and Hudson River Railroad, from the Grand Central Depot, and frequent trains, coupled with a very low excursion rate, render direct access to the cemetery very short and convenient. Although the cemetery is scarcely three years old there have been over 400 interments, and they are increasing monthly. It comprises 400 acres, a small portion of which remains unimproved, but the improved portion is made up of beautifully laid out lots, plots and graves. Already costly monuments have been erected by plot owners, and one of the most handsome as well as substantial receiving tombs in the country, with niches for 178 bodies, adorns a commanding spot in the cemetery.

PRICES.

All lots are sold at fixed rates, per square foot, the area varying from 100 feet to as many feet as may be required. Grass path lots at 60 cents, 80 cents and \$1 per square foot. Open grass path lots at 60 cents, 80 cents, \$1 and \$1.25 per square foot. Avenue lots at 80 cents, \$1, \$1.25 and \$1.50 per square foot. Full lots contain 20x20, 400 square feet. Lots, three graves, 10x10, 100 square feet, \$60, \$80 and \$100. Corner posts for same, \$7.50. Lots, four graves, 7x20, 140 square feet, \$84, \$112, \$140 and \$175. Corner posts for same, \$9. Lots, six graves, 10x20, 200 square feet, \$120, \$160, \$200 and \$250. Corner posts for same, \$9. Lots, eight graves, 13x20, 260 square feet, \$156, \$208, 260 and \$325. Corner posts for same, \$9. Lots, twelve graves, 20x20, 400 square feet, \$240, \$320, \$400 and \$500. Corner posts for same, \$12.



INTERIOR RECEIVING TOMB, KENSICO CEMETERY.

Opening graves in private lots for adults, usual depth, six feet, \$5. For children under ten years of age, \$4.

In single graves for adults, opening seven feet deep, \$12. For children under ten years of age, \$8.

Special single graves in reserved lots, for adults, \$20. For children under ten years of age, \$15, including opening.

Interments made in the receiving tomb are subject to the following charges and conditions: A deposit of \$25 is required for each adult, and for each child under ten years of age \$18. Lot proprietors may have the temporary use of tomb without charge. For removal from receiving tomb within ten days, in the cemetery, the full amount of deposit will be returned. For removal within three months: If an adult, there will be returned, \$20; if a child, there will be returned \$14. For removal within six months: If an adult, there will be returned, \$13; if a child, there will be returned, \$8.

If a body is not removed within six months, an extra charge of \$2 for an adult, and \$1 for a child, is made. A funeral car is run from the Grand Central Depot to the cemetery, making a special train for fifty persons at \$60. If the car is attached to a regular train, the charge is \$40. For an ordinary passenger car attached to a regular train, \$30 is charged. For the conveyance of a body by train to the cemetery, \$1.

James F. Sutton is President of the cemetery; Allen S. Apgar, Vice-President; Samuel I. Knight, Secretary and Treasurer, and Reese Carpenter, Comptroller.



LAUREL GROVE CEMETERY**PATERSON, N. J.****OFFICE, 293 MAIN STREET, PATERSON, N. J.**

This cemetery was opened in 1888, and embraces 186 acres. It is situated on the Passaic River, one and one-half miles southwest of Paterson, N. J., and is reached by the Erie, New York, Susquehanna & Western, and Delaware Lackawanna & Western Roads to Paterson, thence by cars to the main entrance. So far, there have been about 3,000 interments in the cemetery, and the average yearly number of interments is about 700. The lawn plan prevails in this cemetery.

Price of single graves, 3.6x8x6 ft., adult, \$12, inclusive of opening; child's, \$10. An extra charge of 50 cents per foot is made for sinking a grave beyond six feet to ten feet. The price of lots or plots range from \$50 to \$250, and measure 9x19 feet and upwards. Cost of reopening a grave, adult, \$4 to \$6, according to depth; child's, \$3. Three bodies, adults, allowed to a single grave, and tomb charges, adults, \$12; child, under ten years, \$10. There are rebates of \$4 and \$5 for removals within specified periods of time. Twenty-four hours' notice required to secure reopening of a grave.

F. C. Vandyk, President; J. A. Morriss, Vice-President; G. C. Mason, Treasurer, and M. Dunn, Secretary. Charles Scrivens is Superintendent.

LINDEN HILL CEMETERY,**EAST WILLIAMSBURGH, L. I.****OFFICE, 456 EAST HOUSTON STREET, N. Y.**

Linden Hill, or Methodist Episcopal, Cemetery is situated on Metropolitan Avenue, East Williamsburgh, three miles from the Grand and Roosevelt Street ferries. It is reached by the North Second Street cars from Grand Street, Houston Street and Roosevelt Street ferries, and by the Union Avenue cars from the Greenpoint ferries. The cemetery comprises about thirty acres, was opened in 1852, and the average number of interments per year is 1,000. The estimated number of bodies buried in the cemetery is 25,000. The size of single graves is 2x7x6 ft. for adult, and 4x6 for child, price \$10 and \$6. Plots 10x10 and 10x20 ft. range from \$30 to \$100, and upwards. Cost of reopening a grave is \$5 for adult, and \$3 for child, and three adult bodies to a single grave. There are from four to eight graves to a plot, and twenty-four hours' notice required to reopen a grave. There is no charge for use of vault for ten days, but for a longer period 50 cents per month is charged for a child under ten years, and \$1 for bodies over that age. Charles Maytrott is President, Frederick Plate, Secretary, and F. Hauscheldt, Treasurer and Superintendent.

LUTHERAN CEMETERY,**MIDDLE VILLAGE, L. I.****OFFICE AT CEMETERY AND AT 293 BROADWAY, N. Y.**

Lutheran Cemetery was founded by the United Lutheran churches of New York, and chartered March 22, 1852. It comprises about 400 acres, was opened as a private cemetery in 1850, and is the leading German burying ground of the metropolis. It is located on Metropolitan Avenue, Middle Village, L. I., about four miles from Grand Street and Roosevelt Street ferries, and is reached by the Long Island Railroad to Fresh Pond or Glendale, by the Williamsburgh ferries, and by all the Brooklyn lines via Myrtle Avenue. The estimated number of interments is 230,000 with a yearly average of about 9,500. Single graves 3x7x6 ft. are sold for \$10 for adult, and \$6 for a child. Plots ranging from 10x10 ft. and upwards cost from 60 to 80 cents per square foot, and the actual cost only is charged for reopening a grave. There are nine graves to a plot, and three adult bodies to a single grave. The vault charges are \$1 with \$10 for the price of a grave, which is refunded when a grave or plot is purchased in the cemetery. No body is held longer in the tomb than six months. Jacob A. Geissenhaimer, President; F. W. Geissenhaimer, Treasurer; R. P. Getty, Secretary, and David Avenius is Superintendent.

ROHAN BROTHERS,
Monumental Works,

BLISSVILLE, CALVARY CEMETERY,

LONG ISLAND.

Designs and Estimates Furnished.

P.O. BOX 46.

C. ROHAN, Proprietor.

◆ ◆ ◆ ◆ FULTON ◆ ◆ ◆ ◆

Livery & Boarding Establishment,

Nos. 6, 8 & 10 SEVENTH AVENUE,
NEW YORK.

Coaches and Coupes

Supplied for Funerals, Parties, Weddings, &c.
 Careful and respectful drivers.

**HORSES BOARDED WITH BEST OF ATTENTION
 AND CARE. RATES REASONABLE.**

MACPELA CEMETERY,**FRESH POND, L. I.****OFFICE ON GROUNDS.**

Macpela Cemetery is a Jewish burial place about forty acres in extent, and adjoins Cypress Hills Cemetery. It is reached by the same routes as the latter cemetery. The cemetery was founded in 1855, and belongs to the congregation Temple El-Bethel, Sixty-third Street and Lexington Avenue, New York. The grounds are nicely laid out, and it is estimated that several thousand bodies are interred. The prices of graves and plots are reasonable. Union Field and New Union Field Cemeteries adjoin Macpela Cemetery, and are likewise controlled by the Temple El-Bethel.

MACPELAH CEMETERY,**NEW DURHAM, N. J.****OFFICE ON GROUNDS, AND AT 304 WEST 20TH STREET, N. Y.**

This cemetery is located at New Durham, N. J., about four and one-half miles from the Hoboken ferries from Barclay and Christopher Streets, and comprises ten acres. It is strictly a Protestant Cemetery, and is reached by the same routes as Hoboken Cemetery. The cemetery was opened in 1853 by the Third Reformed Presbyterian Church Society of New York, and there are nearly 17,000 bodies buried in it. The average number of interments per year is 150.

Price of graves, 2.6x8x7 ft., \$7; cost of reopening a grave is, adult, \$5, and child \$4. Two adult bodies allowed to a grave. Plots 10x16 feet, eight graves; cost from \$40 to \$75. There is no vault. About twenty-four hours' notice required to reopen a grave.

MAIMONIDES CEMETERY,

JAMAICA, L. I.

OFFICE ON GROUNDS.

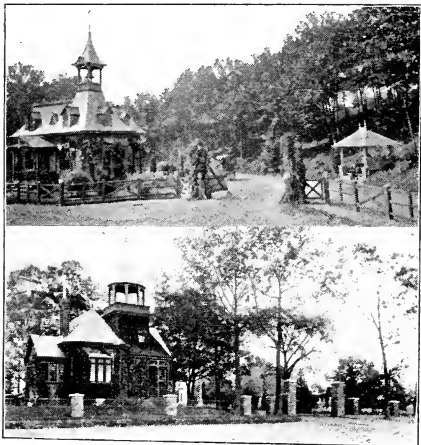
Maimonides cemetery comprises about seven and one-half acres, and is located on the Jamaica Plank Road, Jamaica, L. I., and is reached by the cars from the Williamsburgh ferries to East New York, thence by electric cars to the cemetery. About 1,000 bodies have been buried in the cemetery. John Benisch is Superintendent.

MAPLE GROVE CEMETERY,

JAMAICA, L. I.

OFFICE, 1286 BROADWAY, N. Y.

About 100 acres comprise Maple Grove Cemetery, which is located in the western part of the town of Jamaica, L. I., about seven miles from Long Island City. It is reached by trains of the Long Island Railroad from Long Island City to Maple Grove, or to Morris Park or Richmond Hill Station; from Long Island City by Thomson Avenue from Newtown; from Greenpoint by the Hoffman Boulevard, and Williamsburgh by North Second Street. The



ENTRANCE AND LODGE MAPLE GROVE CEMETERY.

cemetery was organized in February, 1875, and the first interment was made February 12, 1876. About 5,000 interments have been made since that time, and over \$100,000 has been so far expended in improving the cemetery.

Price of single graves: adult, \$12, including opening; child, under ten years, \$8.50. Opening adult's grave costs \$5; child's \$4. Lots ranging from 7x18 ft. to 16x25 ft., and admitting from four to fifteen adult graves, vary in price from 60 cents to \$1 per foot, according to location. For use of the receiving tomb, the charge of \$12 is made for an adult, and \$8.50 for a child; but the money is refunded if the body is removed to the cemetery ground within thirty days. If the body be removed from the cemetery, only one-half the deposit will be returned. The sum of \$2 per month is charged for keeping the body a longer period, but no body is allowed to remain longer than three months. For opening private vaults \$3 is charged. Twenty-four hours' notice required for opening a grave.

William S. Cogswell is President; Ferris S. Thompson, Vice-President; H. R. Heath, Secretary, and Charles S. Goodwin, Treasurer and Comptroller.

MARBLE CEMETERY,

SECOND STREET, NEAR SECOND AVENUE, N. Y.

OFFICE, 164 EAST 37TH STREET.

This is an old and small cemetery situated on the north side of Second Street, near Second Avenue, New York, and comprises about

one-half a city block. The place is made up of vaults, and receives bodies largely for temporary purposes pending shipment. There have been about 1,200 interments in the cemetery, and the average number per year is about twenty, subject to the restrictions of the Board of Health of New York. There are 270 vaults on the grounds. For the use of the receiving tomb the sum of \$25 is charged. Fifteen dollars are returned if the body is removed within a month, and \$5 if removed within two months, and after this a charge of \$5 will be made. The charge for opening a private vault is \$10. C. P. Jackson is Superintendent.

MORAVIAN CEMETERY,

NEW DORP, S. I.

OFFICE AT THE CEMETERY.

Moravian Cemetery is located at New Dorp, Staten Island, N. Y., and comprises eighty-four acres. It is one of the very oldest cemeteries in the vicinity of New York, having been established as the Moravian Church Cemetery in 1742. The cemetery is supposed to have been opened to the general public about 1820, and since that time about 20,000 interments have taken place. The average number of yearly interments is 200. The cemetery is reached by the Staten Island ferry to St. George, thence by Vanderbilt Avenue and Richmond road to the main entrance. The distance is about five miles from St. George landing. In this cemetery is located the tomb of the Vanderbilt family, and among the prominent persons buried are: George William Curtis, Rev. Charles F. Deems, Col.

Elliott F. Sheppard, William H. Vanderbilt and Commodore Cornelius Vanderbilt. Single graves 2.6x7x6 and 10 ft \$10, child under ten years \$6 ; temporary graves \$5. Opening graves \$5 for six feet, and \$1 for each additional foot. Plots vary in price from \$40 to \$5,000 according to size and location. Two or three bodies allowed to a grave, and twenty-four hours' notice for reopening same. Vault charges are \$20 for adult, and \$15 for children under ten years for a period of six months and no longer. No rebates and no wooden fences or hedges are allowed in this cemetery. Charles W. Eberman, President ; N. J. Ostrander, Treasurer and Superintendent, and Charles Wyeth, Engineer and Surveyor.

MOUNT CALVARY,

WHITE PLAINS, N. Y.

OFFICE, RECTORY CATHOLIC CHURCH, WHITE PLAINS, N. Y.

This cemetery comprises about seventy acres, and is situated in North White Plains. It is only a few years old, and is reached from New York via White Plains, and the New York and Harlem Railroad.

The price of single graves is \$10 including opening. Plots are sold from \$50, and upwards. Two bodies allowed to each grave.

MT. HOPE CEMETERY,

JAMACIA, L. I.

OFFICE ON GROUNDS.

This cemetery is made up of twelve acres, and is reached by the Long Island Railroad to Woodhaven, thence to East New York, and by the Brooklyn Bridge and ferries, by cars to East New York.

MT. HOPE CEMETERY,

MOUNT HOPE, WESTCHESTER COUNTY, N. Y.

OFFICE, 380 SIXTH AVENUE, N. Y.

TELEPHONE, 980 18TH.

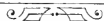
Mount Hope Cemetery is situated at Mount Hope, Westchester County, five miles from the limits of the city of New York, and is reached by either the Sixth or Ninth Avenue Elevated Railroad, and

the New York & Putnam Railroad from One Hundred and Fifty-Fifth Street and Eighth Avenue, or by the main line of the New York Central & Hudson River Railroad by way of Hastings, which is one mile distant. The cemetery has a commanding situation and is regarded as an ideal rural burying ground. Although established less than ten years, it is fast coming to be known as one of the beautiful cemeteries of the metropolis. One hundred and eighty acres comprise the grounds, and these are divided into sections, plots and lots, and so far, nearly 600 interments have taken place. The average number of interments per year is about 150. The cemetery was founded in 1886, but it was not opened to the public until 1889. Dion Boucicault, the celebrated actor, is buried in this cemetery.

The price of graves, usual size and depth, 6 feet is \$15; lots 10x12 to 20x20 ft., admitting from four to twelve graves, \$80 to \$300. Charge for reopening a grave is \$5, including hearse, tent, attendants, etc. Three adult bodies to a grave, and twenty-four hours notice is usually required to reopen a grave. There is a vault charge, but for parties intending to select plots, the use of the vault is free. The vault regulations are very liberal. The lawn plan prevails in this cemetery and, consequently, no enclosure of lots, plots or graves is tolerated. The amount paid for a grave is refunded when a lot or plot is purchased, less \$5, which covers interment charges. W. P. St. John, a well-known banker of New York, and Typographical Union No. 6, own plots in this cemetery.

Frank R. Lawrence is President; George L. Montague, Vice-President; E. M. L. Ehlers, Treasurer; H. A. Taylor, Secretary; J. D. Slocum, Comptroller, and George F. Balmer, Superintendent.

HEARSEs.



YOUNG'S STABLE,

302 Mott Street,

NEW YORK.

TELEPHONE CALL, 818 SPRING.

Undertakers' supplied with hearses at all hours and to all
cemeteries.

ESTABLISHED 1857.

Office of

The Westfield Plate Company,

21 BOND STREET,

NEW YORK CITY.

Manufacturers of Fine Casket Hardware.

TELEPHONE, 1067 SPRING.

FACTORY:

Thompsonville, Conn.

W. R. EDWARDS.

Manager New York Office.

MT. NEBOH CEMETERY,**FRESH POND ROAD, CYPRESS HILLS, L. I.****OFFICE, 23 BIBLE HOUSE, N. Y. CITY.**

Mount Neboh Cemetery was founded in 1888, and opened the same year, and since that period over 600 interments have taken place in its plots and graves. It is one of the leading Jewish Cemeteries of New York, comprises about fifteen acres, and is located on the Fresh Pond Road, in the rear of the Cypress Hills Cemetery. It is reached by the same routes as Cypress Hills Cemetery, and is a well-kept and excellently laid out cemetery.

The size of single graves is 7x4x6 ft., and cost \$25, including opening and closing. Plots containing 320 square feet, range from \$100 to \$500, and usually admit of fourteen graves. One body is allowed to a grave, and opening charges are \$5 for adult, and \$3 for a child under sixteen years. On three hours' notice a grave will be opened.

Myer Stern is President of the cemetery; Morris Tuska, Vice-President; Louis Sternbach, Treasurer, and William Simpson, Secretary.

MT. OLIVET CEMETERY,**MASPETH, L. I.****OFFICE AT THE CEMETERY.****TELEPHONE, 1362 A WILLIAMSBURGH.**

Mount Olivet Cemetery was founded and opened to the public in 1850, and contains about 8,500 bodies. It is situated on Grand Street, Maspeth, L. I, three and a half miles from the Grand and Roosevelt Street ferries · sixty acres in extent, and is reached by the cars from the Williamsburgh ferries. The annual number of interments is about 900.

The price of adult graves, 3x8x7 ft., is from \$10 to \$15, child, \$6.50 to \$12 ; temporary graves, adult, \$5, and child's \$3. The lots range from 9x11 to 18x22 ft., and cost from \$50 to \$200 and upwards. Reopening of a grave costs \$5 for adult, and \$4 for child. Three adult bodies are allowed to a grave, and two to lot or plot graves when opened six feet deep. Twelve hours' notice required for opening a grave. Vault charges require a deposit of \$20 for each adult body, and \$15 for each child under ten years. If the body is removed within thirty days \$18 and \$13 are returned. The regular vault charge is \$2 per month. No wooden enclosures allowed. John S. Ellis, President ; A. V. H. Ellis, Treasurer ; James M. Waterbury, Vice-President ; J. C. Howard, Secretary and C. M. Chamberlain, Superintendent.

MT. OLIVET CEMETERY,**ELIZABETH, N. J.****OFFICE, RECTORY ST. PATRICK'S CHURCH, ELIZABETHPORT, N. J.**

This Catholic Cemetery was opened in 1870, and contains upwards of 5,000 bodies. It is located on Madison Avenue, Elizabeth, N. J., one mile from the city line, and is reached by the Pennsylvania Railroad, or Central Railroad of New Jersey to Elizabeth. It is about forty-five acres in extent, and the yearly interments average 400.

Price of single graves, 2.6x8x6 ft., \$7; child's grave, \$5. Lots 10x8 and 10x16 ft. and upwards, vary in price according to location. Charges for reopening a grave are \$5 for adult, and \$3 for a child. Two adult, or three children's bodies allowed to each grave. There is no vault, and the usual day's notice is required to reopen a grave. Joseph Steebe is Superintendent.

MT. PLEASANT CEMETERY,**BELLEVILLE AVENUE, NEWARK, N. J.****OFFICE, 791 BROAD STREET, NEWARK, N. J.**

Mount Pleasant Cemetery is one of the oldest, and at the same time most beautiful cemeteries of Newark, N. J., and is located on Belleville Avenue in that city. It was founded, January 24, 1844.

and dedicated June 18th of the same year, and it is estimated that there are about 12,500 bodies interred within its limits. The cemetery comprises fifty acres, and it is divided into sections, lots and plots, adorned by wide avenues and paths thoroughly paved. This was the principal Protestant burying ground for Newark during a long term of years. It has fine monuments and tombs, and the most constant care is bestowed upon the general appearance of the property. There are no single graves.

Lots 13x25 ft., and plots 25x25 ft., range in price from \$300 to \$1,000, according to location. There are twelve graves to each lot, and twenty-four graves to a plot. The price of opening lot and plot graves range from \$2 to \$12, and one adult body is allowed to each grave. Twenty-four hours' notice is required to open a grave. Charges for receiving tomb are : For each adult, a deposit of \$30 will be required. If removed within fifteen days \$25 will be returned. If removed to any lot in the cemetery within three months \$20 will be returned. If removed to any lot in the cemetery within six months \$15 will be returned. If removed from the cemetery within six months \$10 will be returned. For each child, twelve years of age or under, a deposit of \$20 will be required. If removed within fifteen days \$15 will be returned. If removed within three months \$10 will be returned. If removed within six months \$5 will be returned. If not removed within six months, nothing will be returned. Extra charge for use of tomb \$2 per month. Contagious diseases not allowed to be placed in receiving tomb.

Henry C. Howell is President of this cemetery ; Edgar E. Bend, Secretary and Treasurer ; Elis R. Carhuff, General Manager, and

E. C. Cramer, Managing Superintendent. A few of a long list of prominent persons buried in this cemetery, include Frederick T. Frelinghuysen, ex-Secretary of the State of New Jersey; Peter Ballentine, brewer, and ex-Mayor Opdyke, of New York. Inventor Thomas E. Edison, is a lot owner in this cemetery.

MT. ST. MARY'S CEMETERY,

BLACK STUMP, FLUSHING, L. I.

OFFICE, RECTORY ST. MICHAEL'S CHURCH, FLUSHING, L. I.

This is an old cemetery and is located at Blackstump, between Flushing and Jamaica, L. I., and comprises about four acres in extent.

The price of adult single graves 2.6x7x6 ft., usual size, is \$8, including opening; child's, \$7, and reopening grave is, adult \$3; child \$2; plots \$25 and upwards. Two bodies to a single grave. There is an average of about fifty interments in the cemetery every year.

THE MORGUE,

FOOT OF EAST 26TH STREET, NEW YORK CITY.

The Morgue of the city of New York is located on the grounds of Bellevue Hospital at the foot of East Twenty-sixth Street, and has long been a place of peculiar importance. It is the temporary

depository for the unclaimed dead of the metropolis, and over 86,000 bodies have been received there since its opening many years ago. All bodies of persons who die in the public institutions of the Department of Charities and Correction of the city of New York are sent there preliminary to being buried in the City Cemetery or claimed by relatives or friends. All persons who die on the streets, are, as a rule, removed to the morgue, as well as those dying in the different hospitals, which are unclaimed. Unclaimed bodies are usually kept forty-eight hours before burial in the City Cemetery. The average number of bodies received at the morgue yearly is 8,000. Funerals take place from the morgue every day, and in order to obtain a body, the regular burial permit from the Board of Health must invariably be presented. A. N. White is keeper of the morgue, and he has filled that position for over twenty years.

MT. ZION CEMETERY,

LAUREL HILL, L. I.

OFFICE AT CEMETERY.

This is a new cemetery and is located at Laurel Hill, Newtown, L. I. It is reached by the electric cars from Long Island City, or by carriage the same routes as to Cavalry Cemetery.

NATIONAL CEMETERY,**CYPRESS HILLS, JAMAICA AVENUE, BROOKLYN, N. Y.****OFFICE ON GROUNDS.**

This is a national cemetery and belongs to the United States Government. Its care and maintenance are vested with the Quartermaster's Department of the U. S. Army, and any soldier or sailor of the civil war honorably discharged from service is entitled to a burial in the cemetery free of cost. The cemetery comprises fifteen and one-half acres and is divided into two parts, the "upper cemetery" and "lower cemetery," and the former lies within the enclosure of Cypress Hills Cemetery. The "lower cemetery" adjoins Salem Fields Cemetery on Jamaica Avenue. The "upper cemetery" was opened in 1862, and no more bodies are buried in its graves. The total number of bodies buried in this part is 3,928. There are about 1,400 bodies in the "lower cemetery," and in this portion there are about eighty interments per year. No graves are sold. Friends of soldiers or sailors buried in the cemetery may erect headstones, and the grave allotments are, 4x8x6 ft. Twelve hours' notice required to secure the opening of a grave. The presentation of the discharge of a deceased soldier or sailor to the superintendent will insure burial. Noble Warwick is Superintendent.

NEW UNION FIELDS,**NEWTOWN, L. I.****OFFICE AT CEMETERY.**

New Union Fields Cemetery is a Jewish cemetery twenty-one acres in extent, and is located in Newtown, L. I. It is reached by the same routes as Macpelah Cemetery, and is owned by the latte corporation. Several hundred bodies are buried in this cemetery. E. Beck is Superintendent.

NEW YORK CEMETERY,**HACKENSACK, N. J.****OFFICE AT CEMETERY OR AT 51 HUDSON STREET, HACKENSACK, N. J.**

New York Cemetery comprises about seven acres, and is located in Hackensack, N. J. It was opened for interments in 1850 by the Free Reformed Church of Hackensack, and held by that body until July 8, 1891, when it formally passed into the hands of the New York Cemetery Association, its present owners. It is reached from Hackensack, N. J., and by the New Jersey and New York, and the New York, Susquehanna and Western Railroads to that place from New York.

Prices of single graves \$12 for adult, and \$7 for a child, including opening. Reopening adult grave is \$5, and child under twelve years, \$3. The depth of single graves is six feet for adult, and five feet for child. Vault charges are \$20 for adult, and \$15 for a child. There are rebates of \$15 and \$12, when a body is removed to a lot or grave in the cemetery, and \$12 and \$10 when removed from the cemetery. Peter I. Conklin is President; James A. Van Alen, Vice-President; I. I. Demarest, Treasurer, and J. H. Hopper, Superintendent. There are about 2,800 bodies buried in this cemetery.

NEW YORK CEMETERY,
OCEAN AVENUE, JERSEY CITY, N. J.
OFFICE AT CEMETERY.
TELEPHONE NO. 8 JERSEY CITY.

New York Bay Cemetery is one of the largest Protestant burying grounds in Hudson County, N. J., and is located on Ocean and Chapel Avenues, Jersey City, N. J. It is, besides, one of the oldest cemeteries in the vicinity of New York, having been opened in 1849. About 50,000 bodies have been interred in its plots and graves. The cemetery comprises about one hundred acres sloping to the waters of the bay, and a large number of corporations, societies, lodges and charitable organizations own plots within its confines. It is reached by trains of the Central Railroad of New Jersey to Greenville, Jersey City, and by Grand Street and Ocean Avenue cars from the Pennsylvania ferry.

Size of single graves 2.6x7x6 ft., and cost \$20 and \$25, according to location. Lots 8x10 ft. range in price from \$100 to \$150, and admit of four graves. Two interments, adult, to a single grave, and cost of reopening is \$5 for adult and \$4 for a child. Twenty-four hours' notice necessary to secure opening of a grave. No wooden enclosures of lots or graves allowed.

Lewis E. Wood is President of the cemetery; Edward Hoos, Vice-President; James G. Hasking, Secretary and Treasurer, and Thomas W. Tilden, Superintendent.

NYACK RURAL CEMETERY,

NYACK, N. Y.

OFFICE, COMMERCIAL BUILDING, NYACK, N. Y.

AND 210 8TH AVENUE, N. Y. CITY.

This is a comparatively new cemetery and is located just outside of Nyack, N. Y. It is reached by the Northern Railroad of New Jersey to Nyack. It comprises about eighty acres, and several hundred bodies have been interred in its plots and graves. Price of single graves \$8; plots \$50 and upwards. Opening graves \$5, and one body to a grave.

OAK HILL CEMETERY,**NYACK, N. Y.****OFFICE AT CEMETERY.**

Oak Hill Cemetery is situated at Nyack, Rockland County, N. Y., and is reached by the Northern Railroad of New Jersey, or by ferry from Tarrytown, N. Y. It was founded in 1848 and opened in July of the same year. There have been about 5,800 bodies interred, and the average number of interments per year is 175. Major General Daniel Ullman, General James H. Blauvelt and Senator James Booth, are among the prominent persons buried in the cemetery.

Single graves are sold at \$13 for adult, \$10 for children under ten years, and \$7 for infants, inclusive of opening. Plots vary from 25 cents to \$1 per foot, according to location. Opening of graves cost \$5 for adult, and \$4 for child. The usual depth is 5 feet, and \$1 is charged for every extra foot to 9 feet. Opening vaults under ground is \$4, and tombs in side hills and above ground, \$3. Receiving tomb charges are, for opening tomb \$1 : for each child under ten years \$1 per month, and for each person over ten years \$2 per month. The receiving tomb is provided for the accommodation of those who intend to purchase lots. No wooden enclosures allowed.

James H. Christie is President : Charles E. Smith, Vice-President : George C. Stephens, Treasurer, and E. H. Cole, Secretary. George W. Scott is Superintendent.

OAKLAND CEMETERY,**YONKERS, N. Y.****OFFICE, 51 WARBURTON AVENUE, YONKERS, N. Y.**

This cemetery comprises about seventy acres, and is located on Ashburton Avenue and Walnut Street, Yonkers, N. Y. It is reached by the New York Central and Hudson River Railroad, and New York and Putnam Railroad, and also by the road from Kingsbridge, New York City, by Central Avenue, and other avenues leading to Yonkers. It was founded in 1866, and opened to the public in the fall of 1867. About 2,000 bodies have been interred, and the annual interments average 150. Single graves, adult, are 2x6x6 ft., child's, 2x4x6 ft., and cost, including opening and closing, \$10 and \$7 in Nepperhan plot, and \$15 and \$10 in Terrace plot. The sum of \$1 is charged for sinking grave extra foot in depth. Lots vary in size from 14x27 ft. and upwards, but the standard size contains 378 superficial feet. Lot prices range from \$50 to \$600, according to location, and in lots 14x27 ft. twelve interments are allowed. Opening and closing adult graves \$5, and a child's \$4. Two bodies allowed to a grave. Receiving tomb charges are \$25 for adult, and \$20 for child under ten years. No wooden enclosures allowed. Rebates are allowed on vacated graves when lots are purchased. Edward Weston, President; Robt. P. Getty, Vice-President; J. Christy Bell, Jr., Secretary, and J. Harvey Bell, Treasurer.

OHEB SCHALOM CEMETERY,**530 SOUTH ORANGE AVENUE, NEWARK, N. J.****OFFICE AT CEMETERY.**

Oheb Schalom Cemetery is a small Jewish cemetery on South Orange Avenue, Newark, N. J., one and one-half acres in extent, was opened in 1866, and is reached by South Orange Avenue in that city. There have been about 400 interments, and about fifteen interments take place each year. Size of graves 2x7x6 ft., and cost \$50, plots 4x14 ft., \$100. The sum of \$3 is charged to open a grave, and one body allowed to each grave. There is no vault. The congregation of Oheb Schalom on Prince Street, Newark, owns the cemetery. James Cassidy, Superintendent.

PATERSON AND FAIRLAWN CEMETERIES,**PATERSON, N. J.****OFFICE, 97 CLINTON STREET, PATERSON, N. J.**

Paterson Cemetery is situated on Goffle Road, and Fairlawn Cemetery on Ridgewood Road, Paterson, N. J., and both cemeteries are the property of Abraham Vermeulen of that city. The former comprises two acres divided into three sections, while the latter has nineteen acres, and eighteen sections. Paterson Cemetery was opened in 1869, and Fairlawn the early part of 1894. Both cemeteries are reached by the Erie and New York, Susquehanna and

Western Railroads to Paterson. The average number of interments per year in Paterson Cemetery is 100. Single graves in Fairlawn Cemetery are 3x9x6 and 8 feet, and cost \$10 for adult, and \$7 for child. Plots 9x19, 12x19, 15x19 and 18x19 ft., \$50 to \$150. Cost of opening graves \$4 for adult, and \$3 for child. Three bodies to a single grave. Five hours' notice required to open same. No interments take place in these cemeteries on Sunday except in cases of contagious disease. There is no vault.

PRESBYTERIAN CEMETERY

PATERSON, N. J.

OFFICE ON GROUNDS.

This cemetery is the property of the Presbyterian Church of Paterson, N. J., and is located at Market and Vine Streets. No graves are sold. Cost of opening a grave is \$4.

QUAKER CEMETERY,

NEWTOWN, L. I.

Quaker Cemetery is situated in Newtown, L. I., and comprises one acre. It is reached by the North Second Street cars from Williamsburgh ferries. Over 200 bodies have been interred in this cemetery.

RAFFEINER CEMETERY,
CENTRAL AVENUE, BROOKLYN, N. Y.

SEE HOLY TRINITY CEMETERY.

RAHWAY CEMETERY

RAHWAY, N. J.

OFFICE ON GROUNDS.

This cemetery was formerly known as Riverside Cemetery, and is situated on St. George's Avenue, Rahway, N. J. It is a very old cemetery, comprises about nine acres in extent, and belongs to the First Presbyterian Church of Rahway. It is reached by the Pennsylvania Railroad to Rahway. Several thousand bodies are buried in this cemetery. Single graves cost \$10, \$12 and \$15, and include opening. Opening a grave is \$5. Plots 50 cents per square foot, and one body to each grave. Twenty-four hours' notice to open a grave.

RIDGEFIELD CEMETERY,
RIDGEFIELD, BERGEN COUNTY, N. J.

OFFICE AT CEMETERY.

Ridgefield Cemetery is the property of the Reformed Dutch Church of Ridgefield, N. J., and is over one hundred years old. It comprises about fifteen acres, and is reached by the Northern

CHICAGO OFFICE:
557-559 WABASH AVENUE.

NEW YORK OFFICE:
INDUSTRIAL BUILDING,
43D ST. & LEXINGTON AVE.

• THE •

James Cunningham Son & Co.
CARRIAGE AND HEARSE BUILDERS,

FACTORY, Rochester, N. Y.

J. H. CARR, New York Agent.

ANTHONY GOLDNER & SON,

Steam Marble and Granite Works,

MONUMENTAL SCULPTORS

Designs furnished, Vaults built. Lots enclosed with Granite and Marble.

OPPOSITE THE OLD ENTRANCE OF CALVARY CEMETERY,

Branch Works, Bradley Ave., near Greenpoint Ave.,

LONG ISLAND CITY.

Railroad of New Jersey. Graves 3x8x6 ft. cost \$10; opening \$5. Lots 8x16 ft. \$50 to \$150, according to location, and admit of six graves. Over 2,000 bodies are buried in this cemetery. Twenty-four hours' notice required to reopen a grave.

ROCKLAND CEMETERY,

SPARKILL, N. Y.

OFFICE, 124 WEST 23D STREET, N. Y.

Rockland Cemetery is by far one of the most beautiful cemeteries in the vicinity of New York, and is situated on the west side of the Hudson, in Rockland County, New York. On its southeast lies Piermont, with Sparkill on its southwest. It is a part of the Palisade range, which rises at this point 500 feet high. On the east, facing the Tappan-Zee, it presents a bold front, covered with native forest. From the entrance gate, near its southwest corner, it rises in gentle slopes, with curves, terraces and plateaus, numerous and diversified.

The cemetery, containing about 200 acres, was founded by the late Eleazer Lord, LL. D., in 1847, for the purpose of providing for the City of New York and surrounding cities a beautiful, romantic and *permanent* resting place for its dead.

At that time, the Erie Railroad terminated at the Hudson River, at Piermont. It was contemplated, as soon as the road was completed to Dunkirk, that there would be frequent and rapid communication on the river, between New York and Piermont; thus affording facilities for reaching and utilizing the cemetery. But the change in the terminus of the road, from Piermont to Jersey City, prevented, for a time, suitable access to the cemetery, and confined its growth simply to local interments. During this period a large portion of the grounds lapsed into dilapidation, covered with undergrowth and forest.

In the spring of 1880 the project originating with Mr. Lord was revived, and Rockland Cemetery was put in a condition suitable for interment. Miles of macadamized roads were built, and bridges, lodges, drains, receiving vaults, rustic arbors, seats, and other conveniences necessary for a first-class cemetery were constructed. About 3,000 bodies are interred in the cemetery. Among the plots are those of the Masons, Odd Fellows, Order of Lafayette of the United States of America, and of several religious denominations. There are many imposing monuments, among others those of General Fremont, the "Pathfinder," of Mr. Eleazer Lord, the original projector of the cemetery, Hezekiah C. Seymour, former State Engineer of the State of New York, Henry Shipman, of the banking house of Shipman & Ayres, and Jerome B. Stillson, the famous war correspondent.

The natural beauty of Rockland Cemetery, its admirable location, the improvements made and contemplated, its contiguity to the great centres of population, its historic and romantic surroundings



THE HUDSON RIVER FROM ROCKLAND CEMETERY.

make it a most attractive resting place for the dead. This cemetery is reached by the Northern Railroad of New Jersey to Sparkill Station, and Tappan Station on the West Shore Railroad. Single graves 2.6x8x6 and 10 feet, \$12 to \$20, according to location. Lots 400 square feet, \$200 and upwards, and admitting fifteen graves. Opening charges for grave, \$5; three bodies to a grave. Ten hours' notice required for opening a grave. Vault charges \$12 to \$20, and bodies may remain three months. Rebates on vault charges are from \$5 to \$10. No wooden, iron or hedge enclosures allowed. A. B. Stone is President of the cemetery; George S. Coe, Vice-President; W. H. Whiton, Secretary and Treasurer. Theron Davis, Manager.

ROMAN CATHOLIC CEMETERY,

PATERSON, N. J.

OFFICE, COR. GRAND AND MAIN STREETS, PATERSON, N. J.

This cemetery is situated just outside the city of Paterson, N. J., and comprises over twenty acres. It was opened in 1867, and over 10,000 bodies are buried in its plots and graves. The yearly interments average 600. It is reached by the Erie, and New York, Susquehanna & Western Railroads to Paterson, thence by two trolley lines. Lots are not sold to persons living outside the city of Paterson, except in cases where relatives wish to be buried with those who die in that city.

Single graves, usual size, cost \$8, and plots containing four graves \$40 to \$50. Opening a grave is \$3, and two bodies allowed to each grave. No vault. A few hours' notice will insure the opening of a grave.

ROSEDALE CEMETERY,

ORANGE, N. J.

OFFICE, 246 MAIN STREET, ORANGE, N. J.

Rosedale Cemetery is one of the oldest and most attractive cemeteries in Essex County, N. J., and is situated in the city of Orange, and townships of West Orange and Montclair. It contains about ninety acres. The distance from the Orange entrance to the Montclair entrance is one mile. About 11,000 interments have taken place in this cemetery, and the average number of interments annually is 600. The lawn plan prevails in the newer portion of this cemetery, and all lot enclosures are consequently prohibited.

Single graves 3x7x6 ft., cost from \$5 to \$15. Opening graves, \$5 adult; child \$3. Three to ten graves are contained in a lot 10 feet square to 15x20 ft. Two bodies are allowed to a grave, and twenty-four hours' notice required to reopen same. Receiving tomb charges are \$10 with a rebate, according to period of time body is kept, but in warm weather boxes are required to be sealed. The vacation of a single grave is taken into account for the disinterring and the reintering when a lot is purchased. Among the prominent

persons buried in this cemetery are Edwin S. Burt, Richard Grant White, George Innes and Gardner R. Colby. Samuel Colgate and Surrogate Ransom of New York, are plot owners.

Charles A. Lighthipe, President, and George P. Kingsley, Treasurer.

ST. JOHN CEMETERY,

MIDDLE VILLAGE, L. I.

OFFICE, ST. JAMES CATHEDRAL, JAY AND CHAPEL STREETS,
BROOKLYN, N. Y.

St. John Cemetery was opened in 1880 by Bishop Loughlin of Brooklyn, and was intended as an annex to the Holy Cross Cemetery in Flatbush. It is located in Middle Village, L. I., and contains 170 acres, divided into sections, plots and graves. The estimated number of interments that have been made is 10,000. There are about 500 interments per year. The grounds are neatly laid out, and there is an office on the same.

Single graves 2x9x8 ft., \$12; temporary graves \$3.62; plots 16x18 ft., \$200 in all sections of the cemetery except in section 15, where they are \$500. Opening grave charges are, adult \$5.12, and child \$3.12. There are sixteen graves to a plot, and four adult bodies allowed to a grave. The vault charge is \$1, and nobody is kept longer than one week. No wooden enclosures allowed. John McCloskey is Superintendent.

ST. JOHN'S CEMETERY,**ORANGE, N. J.****OFFICE, ST. JOHN'S CHURCH RECTORY, WHITE STREET,****ORANGE, N. J.**

This is a small Roman Catholic Cemetery forty or fifty years old, and is located alongside St. John's Church, White Street, Orange, N. J. It is reached by the Delaware, Lackawanna & Western and Erie Railroads, or from Newark by trolley cars. There is a considerable number of bodies buried in it, and the interments each year aggregate about fifty. Graves 2x6x7 feet, \$15, for adult and \$12 for child. Plots containing six graves, \$75. Opening graves, adult, \$5, child, \$3. Twenty-four hours' notice to secure opening of grave.

ST. JOHN'S CEMETERY,**YONKERS, N. Y.****OFFICE, ST. JOHN'S RECTORY, YONKERS, N. Y.**

St. John's is a very old cemetery, and is located about one mile from the stations of the New York Central & Hudson Railroad and New York & Putnam Railroad, in Yonkers, on the Saw Mill River Road. Single graves cost \$12. Opening, \$5.

ST. JOSEPH'S CEMETERY,**YONKERS, N. Y.****OFFICE, 129 ASHBURTON AVENUE, YONKERS, N. Y.**

St. Joseph's Cemetery is situated on the Saw Mill River Road, on the Northern line of Yonkers, N. Y., about three miles from the station of the New York Central & Hudson River Railroad, and near the Neppera Park station of the New York & Putnam Railroad. It contains 25 acres and was opened in 1877. About 3,000 interments have been made in the cemetery, and the average number of interments per year at present is 250. Single graves, 2.3x7x6 feet, \$8; children, \$5; plots, 8x8, 8x12, 12x16, 20x20 feet, \$28, \$40, \$100, \$160; two bodies to a grave. Opening grave, adult, \$6; child, \$4. One day's notice required to secure opening. Vault charge is \$20, but in bad weather, and in the event of the purchase of a plot, no charge is made for a body. John A. Weis is Superintendent.

ST. MARY'S CEMETERY,**RAHWAY, N. J.****OFFICE, RECTORY ST. MARY'S R. C. CHURCH, RAHWAY, N. J.**

This cemetery adjoins Hazelwood Cemetery on the north in Rahway, N. J., and was opened in 1860. It comprises one and one-half acres and belongs to St. Mary's Roman Catholic Church in that place.

Single graves are \$10, including opening, which is \$5. Plots 10 feet square, \$15. One body to a grave, and one day's notice to re-open same.

ST. MARY'S CEMETERY,

CLIFTON, S. I.

OFFICE, ST. MARY'S CHURCH RECTORY, ROSEBANK, S. I.

St. Mary's Cemetery comprises seven acres, and is located at Parkinson Avenue, Clifton, Staten Island. It was opened to the public January 1, 1862, and there have been about 3,600 interments. There are about 100 interments per year.

Single graves 2x7x6, \$7; plots 8x16 ft. containing six graves, \$50. Opening graves, box \$5; coffin \$4, and two bodies to a grave. Vault charge \$1 for over night; but a body is never kept in the vault longer than two days. Twelve hours' notice to open a grave, and two bodies to a grave. The charge of \$15 is fixed for removal of a body from the cemetery. D. McCaffrey, Sexton and Superintendent of the cemetery.

ST. MARY'S CEMETERY,

YONKERS, N. Y.

OFFICE, RECTORY ST. MARY'S CHURCH, SOUTH BROADWAY,

YONKERS, N. Y.

St. Mary's Cemetery is located two and one-half miles from Yonkers Station of the New York Central & Hudson River Railroad,

and about one-half mile from Nepperhan Station on the New York & Putnam Railroad. It is a small and old burying ground.

Single, graves full size, \$10, and opening \$5. A large number of interments have taken place in the cemetery, and there are about 200 interments per year.

ST. MICHAEL'S CEMETERY,

ASTORIA, L. I.

OFFICE AT CEMETERY.

This Protestant Episcopal Cemetery is one of the oldest in the vicinity of New York, having been founded in 1850 by Rev. Thos. M. Peters of this city, and comprises about 100 acres. It is located on Flushing Avenue and Bowery Bay Road, Newtown, L. I., and is reached by either the East Thirty-fourth Street, or Ninety-second Street ferries. It is estimated that there have been over 25,000 interments. The number of interments per year is 2,000. Single graves, \$12 for adult, and \$8 for child, and measure 2x7x6 feet, and 16x4x6 feet. Opening grave is \$5 for adult and \$4 for a child. Opening tomb charges, \$12 adult, and \$8 child. If body be removed to a single grave in the public ground, no further charge will be made. If removed to a private lot, procured within three months, \$4.50 will be refunded for an adult, and \$2.50 for a child. If removed from the cemetery, the charge of \$2 per month for an adult, and \$1.50 for a child will be made in addition to \$1 for removal. If not removed within six months, the body will be

interred in a grave prepared for that purpose. Lot owners may have the use of the tomb for three months upon payment of the usual charge for opening graves in private lots. No enclosures of any kind are allowed, and twenty-four hours' notice is required to open grave.

ST. NICHOLAS CEMETERY,

PASSAIC, N. J.

OFFICE, RECTORY ST. NICHOLAS CHURCH, PASSAIC, N. J.

St. Nicholas Cemetery is situated on the Lodi road, one mile outside of Passaic, N. J., and comprises about fifteen acres. It is reached by the Erie Railroad to Passaic. About 1,000 interments have been made, and the price of a single grave is \$10, regular size and depth. Plots of four graves, \$25. Opening grave \$4, and two bodies to a grave. None but parishioners of St. Nicholas Church or members of their family can bury in this cemetery.

ST. PETER'S CEMETERY,

JERSEY CITY, N. J.

**OFFICE, CEMETERY OF THE HOLY NAME, WEST SIDE AVENUE,
JERSEY CITY, N. J.**

St. Peter's Cemetery is the old Catholic burying ground of Jersey City, and was opened in 1857. It is situated on Tomsele Avenue,

Jersey City, four blocks north of Newark Avenue, and comprises about five acres.

Lots or graves have not been sold in this cemetery for the last twenty-five years. It was founded by fifteen Catholics of Jersey City, who turned over the property in 1873 to Archbishop Corrigan, who was then Bishop of Newark. The graves are 2.3x7x7 ft., and plots 7x9 feet. The plots originally sold for \$15, and graves \$5. Prices for opening graves, removals and rules, are the same as prevail in the Cemetery of the Holy Name, being under the same management.

ST. PETER'S CEMETERY,

WEST NEW BRIGHTON, S. I.

OFFICE, RECTORY ST. PETER'S R. C. CHURCH,

WEST NEW BRIGHTON, S. I.

St. Peter's Cemetery is one of the oldest Catholic Cemeteries on Staten Island, and belongs to the St. Peter's Church, West New Brighton. It comprises about eight acres, divided into sections, lots and plots, and it is estimated that there are over 2,000 bodies buried in it.

Price of single graves, 2.2x7x6 ft., \$15 for coffin and \$16 for box, including opening. Plot containing four graves, \$50. Reopening grave is \$5, and three bodies to a grave. Twenty-four hours' notice required to open a grave

ST. RAYMOND'S CEMETERY,**WESTCHESTER, N. Y.****OFFICE AT CEMETERY.**

This Catholic cemetery is situated in Westchester, N. Y., comprises thirty-five and three-fourths acres and is reached by the Harlem River Branch of the New York, New Haven and Hartford Railroad from East 129th Street, New York, or by electric cars from East 129th Street and Third Avenue. It is also reached by carriage by Westchester Avenue in the Annexed District. The cemetery is about ten years old, artistically laid out into sections, plots and graves, and promises to be one of the most important Catholic burying grounds of the metropolis. It is under the supervision of the Very Rev. Dean McKenna, pastor of the Catholic church in Westchester. Single graves, 2.4x8x6 feet, cost \$12, and \$3 for opening. Plots \$100 and upwards. Reopening graves is \$6. Three bodies, as a rule, to each grave. Twenty-four hours' notice required for opening a grave. The same rules as prevail in Calvary Cemetery at Blissville, L. I., govern St. Raymond's, for it is under the jurisdiction of the Catholic Archdiocese of New York. The cemetery has a vault for temporary use, but no charge is made therefor. William Walsh is Superintendent.

SALEM FIELDS CEMETERY,**JAMAICA PLANK ROAD, BROOKLYN, N. Y.****OFFICE AT CEMETERY.**

Salem Fields is by far the leading and most important Jewish cemetery in the vicinity of New York. It is one of the most beautiful in the world by reason of the lavish care and labor bestowed on its maintenance and improvement, and therein are located some of the most artistic as well as costly monuments and family vaults to be found in any cemetery in the country. Within its limits are the family plots and tombs of the wealthiest and most influential Hebrew residents of the metropolis, and the jealous interest taken in its improvement and embellishment by its owners is amply shown by its attractive and impressive appearance. The cemetery is located on the Jamaica Plank Road, Brooklyn, and lies opposite Cypress Hills Cemetery. Its area is about 200 acres, and it is owned by the Temple Emanu-El of New York City. It is reached by the same routes as Cypress Hills Cemetery. The grounds are laid out into family plots and graves, are watered, and the roads and paths are in asphalt. The cemetery was founded November 23, 1851, and opened in the early part of 1852. It is estimated that there are about 20,000 bodies interred, and the average number of interments per year is 250. The plots are 16x20 ft. and 20x20 ft., and cost

\$1,000, and upwards, according to location. The single graves are \$50, and the cost of opening a grave is \$6 for adult, and \$4 for child. There are from twelve to sixteen graves to a plot, and only one body is allowed to a grave. The receiving tomb charges are \$25 per month, and twenty-four hours' notice to secure opening of a grave. The rules governing enclosures of plots, and the erection of headstones and monuments are very strict, and only granite or marble enclosures are permitted. All plans for enclosures and monuments must be submitted to, and approved by, the officers of the cemetery. Lewis May is President of the cemetery; James Seligman, Vice-President; Charles L. Bernheim, Treasurer, and Myer Stern, Secretary. Peter J. Hiltman is Superintendent.

SANDY HILL CEMETERY,

PATERSON, N. J.

Sandy Hill Cemetery is located on Market Street, near Carroll Street, in the city of Paterson, N. J., and comprises about sixteen city lots. It is a very old cemetery, and is controlled by a number of churches in that city. The cemetery is very little used, only by those who own graves or plots, but it is estimated that there are about twenty-five interments per year.

Plots or graves are not sold in this cemetery. The cost of opening a grave is \$4.

SCHRAALENBERG CEMETERY,**SCHRAALENBERG, N. J.****OFFICE AT CEMETERY.**

This cemetery is situated in Schraalenberg, Bergen County, N. J., is principally owned by members of the local Protestant Church and their ancestors, and is controlled by the consistory of the church. It comprises four acres and is reached by the West Shore Railroad to Schraalenberg Station. It was opened in 1856, and over 1,000 interments have taken place in its plots and graves. There are about 20 interments each year.

The graves are of regular size and cost \$5; plots, \$10. There are five graves to a plot, and cost of opening a grave is \$3, with the additional charge of \$2 for the attendance of the sexton, who is the superintendent of the cemetery. One adult body is allowed to a single grave, except in case of small children, and one day's notice is usually required to secure the opening of a grave. D. D. Blauvelt is Sexton.

SHARETH ISRAEL CEMETERY,**NEWTOWN, L. I.****OFFICE AT CEMETERY.**

Shareth Israel Cemetery is the Portuguese burial ground of New York, is situated in Newtown, L. I., and is reached by the same routes as Cypress Hills. It is a Jewish cemetery comprising about

six acres, and among the bodies interred are those of the celebrated Commander Levy of the United States Navy, and Washington Nathan, whose mysterious murder was the sensation of the metropolis for years. There are about 1,000 bodies buried.

SILVER MOUNT CEMETERY,

RICHMOND TURNPIKE, S. I.

OFFICE, TOMPKINSVILLE, S. I.

Silver Mount Cemetery was incorporated Sept. 6th, 1866, and is located on the Richmond Turnpike, Staten Island. It is reached from New York by the Staten Island ferry to St. George, and comprises about thirty-five acres. It is a well-kept cemetery. It is estimated that there are about 9,000 bodies interred and the average yearly number of interments is 125. Size of single graves is 2x6x7 and cost \$10 for adult and \$5 for child. Plots 30 cents per square foot, and no plot contains less than six graves. Opening grave costs \$6 for adult and \$3 for child. Vault charges \$10 for three months. Samuel Cooper, undertaker, Tompkinsville, S. I., telephone No. 79 F, Tompkinsville, is manager.

SLEEPY HOLLOW CEMETERY,

TARRYTOWN, N. Y.

OFFICE, 130 MAIN STREET, TARRYTOWN, N. Y.

This historic cemetery is the oldest in the vicinity of New York. It was established as a village graveyard in 1648, and embraces 151 acres picturesquely located on the east bank of the Hudson River, twenty-five miles from the metropolis by the New York Central & Hudson River Railroad. Its divisions and subdivisions include sections, plots and lots. A new section of forty-six acres has been added, and it will be laid out on the lawn plan. The entire tract includes all of Sleepy Hollow, which is rich in legendary lore, having been made celebrated by Washington Irving, whose remains lie buried in the cemetery. It is traversed by the Pocantico River, and bounded on the westerly side by the Hudson River. Its landscapes and river views are unusually beautiful. This cemetery is an ideal resting place for departed ones, combining historic memories, rural seclusion and artistic development. Among the bodies of well-known persons buried in Sleepy Hollow Cemetery, are those of George Jones, editor of the *New York Times*; Gordon L. Ford of the *New York Tribune*, and Hon. Moses H. Grinnell, besides seventy-six soldiers and officers of the American Revolution, and one hundred and thirty-two soldiers and officers of the Civil War. Some of the

plot owners are John Archbold, D. N. Barney, James Cunningham, C. C. Clarke, David Dows, Charles H. Delevan, James Fraser, James C. Fargo, Walter S. Gurnee, James A. Hamilton, D. Ogden Mills, J. J. McComb, John D. Mairs, George B. Newton, Mrs. Anson G. Phelps, and Henry Villard.

Sleepy Hollow Cemetery was incorporated in 1849. The number of interments that have taken place is estimated at 14,000, and there are about 300 interments each year.

PRICES.

Single graves : First adult, including sodding, \$10 and \$15 ; first infant, including sodding, \$6 and \$10 ; second interment, adult, including sodding, \$5 ; second interment, infant, including sodding, \$3 ; third interment, infant, including sodding, \$2. For any depth below six feet an extra charge of \$1 per foot is made. Second interments when made in the same grave in any private plot are subject to like charges as in the single grave. Ordinary brick vaults, single, adults, \$28 ; infants, \$16. Grave for boxes exceeding seven feet long twenty-six inches wide, \$1 extra. Orders received after 10:30 A. M. for opening graves for same day \$1 extra. The charge for interments requiring an adult grave to be opened on Sunday is \$7 ; for infant grave \$5, if the order be given after 12 o'clock noon on the Saturday preceding.

Each full lot contains 400 square feet. The ordinary lot is 16x25 ft., which will admit of fifteen adult graves, in three rows of five graves each. The prices of lots vary, generally from \$300 to \$800 each, depending upon the location. Lots 10x10 ft., three adult graves, \$75 and upwards ; lots 12x10 ft., four adult graves, \$90 and

upwards; lots 10x20 ft., six adult graves, \$150 and upwards. Opening grave, adults, including sodding, \$5; children under six years, \$3. Receiving tomb charges are: adult, \$12; infant, \$7.50; opening and attendance, adult \$2; child \$1.50. Bodies can remain in tomb thirty days between October and May, and fifteen days from May to October free of extra charge. Bodies not cared for at expiration of time limit are buried in graves. An extra rate is also charged of 50 cents a day for adult, and 25 cents for a child. There is also a special rate of \$2.50 per month for adults, and \$1.75 per month for infants in good lined cases. One dollar is charged for conveyance of bodies from the tomb to grave. Resodding graves is \$1 for adult, and 75 cents for infant; care of lot for one year \$5.

D. Ogden Bradley is President; Lucius T. Yale, Vice-President; Samuel Requa, Treasurer, and W. T. Lockwood, Secretary and Superintendent.

SPEERS' CEMETERY,

BERGEN AVENUE AND VROOM STREET, JERSEY CITY, N. J.

OFFICE, 21 HOBOKEN AVENUE, JERSEY CITY, N. J.

This cemetery is known as Speers' Cemetery and Bergen Cemetery. It is one and the same cemetery. For information regarding lots, etc., see Bergen Cemetery.

STATEN ISLAND CEMETERY,**RICHMOND TERRACE, WEST NEW BRIGHTON, S. I.****OFFICE, STORE OF JOHN STEERS, WEST NEW BRIGHTON, S. I.**

Staten Island Cemetery was opened in 1850, organized July 1, 1893, and comprises about three acres, containing 171 lots. It is situated on Richmond Terrace, West New Brighton, and is reached by the Staten Island Ferry to St. George. The distance from the latter place, is about two and a half miles. The lots in this cemetery were sold years ago, and there are consequently none for sale at the present time. The size of the lots are 12x24 feet, and admit of 12 adult graves. The price of opening a grave is said to be fixed by the actual cost of labor, and an opening can be made the same day of the funeral. A number of bodies have been interred in this cemetery, and the yearly interments average about 20. Joseph H. Barker, President ; Charles Chambers, Vice-President ; George Simonson, Secretary, and Lawrence Steers, Superintendent.

TEMPLE BETHEL CEMETERY,**NEWTOWN, L. I.****OFFICE AT CEMETERY.**

This Jewish Cemetery is situated in Newtown, L. I., and comprises ten acres. It is reached by the same routes as Cypress Hills. Several hundred bodies are buried in this cemetery.

TRINITY CEMETERY,**BROOKLYN, N. Y.**

SEE HOLY TRINITY CEMETERY

TRINITY CEMETERY,**NEW YORK CITY.****OFFICE, 187 FULTON STREET.**

Trinity Cemetery is owned by the Trinity Church Corporation and was opened in 1843. It embraces about thirty-six acres and occupies the area between West 153d Street and West 155th Street, from Tenth Avenue to the North River. It is an unusually beautiful cemetery, well-kept and carefully guarded, for therein are located the family plots and tombs of some of the oldest and wealthiest families of New York City, including the Astors. It is reached by the Sixth and Ninth Avenue Elevated road to 155th Street, or by the cable cars from 125th Street and Eighth Avenue. The estimated number of bodies buried in the cemetery is 18,000, and about 150 interments take place every year. No single graves are sold. Lots are \$500 and opening of a grave cost \$8 for adult and \$6 for child. Three bodies to a grave. Receiving tomb charges are \$15 for adult and \$12 for child with \$3 additional for opening and closing. If a body is removed from the tomb within six months one-half the charges is refunded. Twenty-four hours' notice is necessary to secure opening of a grave. Otto Meurer is Superintendent.

UNION CEMETERY,**RYE, WESTCHESTER COUNTY, N. Y.****OFFICE ON GROUNDS.**

This is an old and important cemetery and is located in Rye, Westchester County, New York. It comprises about sixty acres, and is reached by the New York, New Haven and Hartford Railroad from New York City. A considerable number of bodies have been buried in this cemetery and there is also a great many interments every year. Price of graves, full size, adult \$8, including opening. Child's grave \$6 and reopening \$3. Reopening adult grave \$4. Plots containing eight graves \$100 and upwards. One body to a grave. Vault charges \$15 per year, and if a body is taken out within six months a rebate of \$5 is allowed.

UNION CEMETERY,**PALMETTO STREET, BROOKLYN, N. Y.****OFFICE AT CEMETERY.**

Union Cemetery is situated on Palmetto Street, between Irving and Knickerbocker Avenues, in the 28th ward, Brooklyn, and is reached by the Fulton, Roosevelt, Grand and Houston Street fer-

ries, and by the trolley lines and Elevated railroads from the same. About ten acres comprise the cemetery, which was founded in 1851, and opened the following year. It is owned by the Methodist Protestant Church of the village of Williamsburgh. By a law passed in April, 1893, all further interments in this cemetery are prohibited, but the cemetery has the right to remove the interred bodies, monuments and headstones to any other locality that will hereafter be selected. The new location has not yet been selected. The officers of this cemetery are : Samuel J. Baines, President ; John A. Wells, Secretary ; Henry L. Joy, Treasurer, and Theodore Cocheu, Superintendent.

UNION FIELD CEMETERY,

NEWTOWN, L. I.

OFFICE ON GROUNDS.

Union Field Cemetery is situated in Newtown, L. I., and is reached by the same routes as Cypress Hills. It comprises about twelve and a half acres, and belongs to the Jewish congregation of New York that control Macpelah Cemetery.

WASHINGTON CEMETERY,**PARKVILLE, L. I.****OFFICE AT CEMETERY AND 291 BROADWAY, NEW YORK.**

Washington Cemetery was incorporated September 7, 1850, and comprises about 100 acres. It is situated in the towns of Gravesend and New Utrecht, Kings County, L. I., about seven miles from the Brooklyn Bridge, and is reached by the trolley lines from any part of Brooklyn to the Prospect Park & Coney Island Railroad station, corner Ninth Avenue and Twentieth Street, South Brooklyn, and Thirty-sixth Street and Ninth Avenue; thence by steam cars to Washington station. It is also accessible by the Prospect Park and Coney Island Boulevard, which leads to the east entrance of the cemetery. There are about 10,000 lots of 400 square feet each in the cemetery, admitting in each lot about 16 adult interments. The cemetery is a Jewish burial ground, although there are many Christians interred in its graves. Several thousand bodies have been interred since the opening of the cemetery, and there is a considerable number of interments every year. Prices of lots vary according to location. Ordinary lot of 400 square feet is \$50 and upwards, half lots \$30 and upwards, and quarter lots \$20 and upwards. Opening grave for adult, \$3; child under 10 years, \$2.

and infant \$1. Charge for disinterring a body, adult, \$5, and child \$3. One body to a grave. Four hours' notice required for opening grave, and all bodies arriving at cemetery after 3 P. M., will be placed in the receiving vault until the following day at a charge of \$2. Isaac Marx is President; Adolphus E. Karelson, Treasurer; Samuel B. Hamburger, Secretary, and Simon Binswanger, Superintendent.

WEEHAWKEN AND PALISADE CEMETERY,

NEW DURHAM, N. J.

OFFICE AT CEMETERY AND 211 WASHINGTON ST., HOBOKEN, N. J.

This cemetery is situated on the Hackensack Plank Road in New Durham, N. J., opposite the town of Union, N. J., about two miles from the Hoboken ferries, and one mile from the West Shore Railroad ferry at Weehawken, N. J. It is reached by these ferries, and the Union Hill line of cars, which pass within two blocks of the entrance. It was founded in 1859, and opened in 1860, comprises about eighteen acres, divided into Protestant, Baptist and Catholic sections, and there have been about 19,000 interments in its plots and graves. The principal plot owners are German residents of Hoboken and Jersey City. Single graves, 3x8x6 ft., cost from \$17 to \$25 for adult, and \$9 to \$12 for child. Lot graves are 2.6x7x6 ft.

for one body, and eight feet deep for two bodies. Lots cost \$25, and upwards, and admit of three graves, and upwards. Cost of opening graves is \$5 to \$8 for adult, and \$3 to \$5 for child, according to depth at \$1 per foot. One body to a single grave, and two bodies to a lot grave. Twelve hours' notice required for the opening of a grave. No body is permitted to remain in the receiving vault longer than forty-eight hours without a permit, but if a lot or grave is purchased in the cemetery, no charge is made for use of the vault. If a body is removed from the cemetery \$10 is charged for the first month in vault, and \$5 for each succeeding month. No wooden enclosure allowed, and when vacated a grave reverts to the cemetery. R. C. H. Raheff, President; Jacob Neuscheler, Vice-President; August Maller, Secretary; Louis Becker, Treasurer, and Louis Becker, Jr., Superintendent.

WHITE PLAINS RURAL CEMETERY,
WHITE PLAINS, N. Y.
OFFICE AT CEMETERY.

This old and picturesque cemetery is situated about one mile north of White Plains depot on the New York and Harlem Railroad, and comprises about twenty-five acres. It was originally the local Methodist Church graveyard, and over 1,000 bodies have been interred. Single graves for adult, 3x8x6 ft. \$9, including opening, and child \$5. Plots 16x16 ft. \$75, and upwards. Opening grave \$5 for adult, and \$3 for child. One body to a grave. W. Shampnois, Superintendent.

WOODLAND CEMETERY,**NEWARK, N. J.****OFFICE, 922 BROAD ST., NEWARK, N. J.**

Woodland Cemetery is situated in the westerly portion of Newark, N. J., near Eighteenth Avenue, and is reached from that city by Springfield Avenue. It was opened in 1855 and since that time about 25,000 bodies have been buried within its limits. The average number of interments per year is 1,200. The grounds comprise about thirty-five acres, which are divided into family lots and single graves. Size of single graves 2, 3, 4x7 feet and cost \$4, \$6, \$8 and \$10. Plots \$75 and upwards. Opening graves \$2, \$3, \$5, and vault charges \$5. Twenty-four hours' notice required to secure opening of grave. No wooden enclosures allowed. Charles Hayes, President, and Thomas Speer, Superintendent.

WOODLAND CEMETERY,**RICHMOND TURNPIKE, STATEN ISLAND, N. Y.****OFFICE, 157 BROAD ST., STAPLETON, S. I.**

This cemetery comprises about ten acres and was opened in the year 1854. It is situated on the Richmond Turnpike, Town of Middletown, S. I., and is reached by the Staten Island ferry to

St. George, the distance from the latter place being two miles. About 6,000 bodies have been buried in this cemetery, and the yearly number of interments is 150. Single graves 3x8x6 feet \$10 for adult and \$6 for child. Lots 16x16 feet \$65 and admit eight graves. Reopening large grave \$5, child's \$3. Two adult bodies to a grave. Eight hours' notice required for opening a grave. Vault charge is \$10 for indefinite period of time. No green hoops or wood allowed for enclosure of lots. Michael Kaffer is President and Superintendent of this cemetery.

WOODLAWN CEMETERY,

JEROME AVENUE, NEW YORK.

OFFICE, 20 EAST 23D ST., NEW YORK.

Woodlawn Cemetery is situated in the Twenty-fourth Ward, New York City, on the line of the New York & Harlem, and the New York, New Haven & Hartford Railroads, twelve miles from the Grand Central Station, and it is reached by the former road as well as by Jerome Avenue from the Harlem River Bridge. It was organized December 29, 1863, and improvements were begun in the spring of 1864. The first interment was made January 14, 1865. The

cemetery comprises 400 acres magnificently laid out under the lawn plan, for Woodlawn is one of the pioneers in adopting this principle for cemetery embellishment. The result is that this is one of the most beautiful cemeteries to be found in any part of the world. The development of the property to its present high state of beauty, has been enhanced by the erection of the most costly and imposing monuments and private tombs of any cemetery in the United States. The tomb of Jay Gould is located here, as well as those of many of the rich and influential citizens of the metropolis, and among its dead are Admiral Farragut, ex-Mayor Havemeyer, Augustus Schell, Sidney Dillon and others distinguished in their particular spheres of action. Millions of dollars are represented in expenditures in beautifying the cemetery and in the erection of monuments and tombs, and the work continues to go on. The cemetery is laid out in about forty plots, each plot bearing an appropriate name, and there is a number of artificial lakes, which with miles of the best of roads and paths, and the choicest trees and shrubs, combine to make it a beautiful city of the dead. There are about 2,000 annual interments, and the estimated number of bodies buried within the limits of this cemetery is 46,000.

PRICES :

Avenue lots \$1.50, \$1.75, \$2.00, and \$2.50 per square foot. Open path lots \$1.50, \$1.75, and \$2.00 per square foot. Grass path lots \$1.25 and \$1.50 per square foot. Lots admitting ten graves may be had for from \$400 to \$1,000, according to location. Corner posts for same, \$12. Lots admitting six graves, for \$250 and \$300, according to location. Corner posts for same, \$9. Lots admitting

four graves, for \$162.50 and \$175, according to location. Corner posts for same, \$7 and \$9. Lots admitting three graves, for \$125 and \$160, according to location. Corner posts for same, \$7.

Price of adult grave, including opening, in Receiving Lot, \$50, with \$30 rebate if removed at any time. Single graves, including opening, \$30 for adult and \$20 for child under ten years. Two bodies to a single grave, and if a body is removed from these graves at any time \$12.50 will be refunded for an adult and \$8 for a child. Opening tombs \$5; adult graves, usual depth of six feet, \$5, children's graves under ten years \$4. Receiving tomb deposits are: \$30 for adult and \$24 for child under ten years. For placing a body in the Receiving Tomb a charge is made of \$5 per month for an adult and \$4 per month for a child, In all cases the body must be removed within three months. If removed from the cemetery, an additional charge of \$5 for adults and \$4 for children is made. The charges, as above stated, will be deducted from the deposit. If not removed in three months, the remains will be interred in a grave prepared for that purpose.

Cost of funeral train, car Woodlawn, to cemetery and back is \$50; for car attached to passenger train \$35; for ordinary car attached to passenger train \$25; for conveyance of remains from New York to Woodlawn \$1; railroad fare, excursion, to cemetery, is 35 cents.

W. A. Booth is President of Woodlawn Cemetery Corporation, Caleb B. Knevals, Vice-President and Comptroller; Charles S. Smith, Treasurer; James D. Smith, Secretary, and Charles P. Knevals, Assistant Treasurer. Henry J. Diering is Superintendent.

BOARD OF HEALTH OF NEW YORK.

OFFICE, Criminal Court Building,

Franklin and Centre Streets, New York.

The Office of the Board of Health is open daily from 8 A. M. until 5 P. M., except on Sunday, when it closes at noon. All permits must be obtained there for interring a body dying within the city, and no dead body can be removed from one place to another, unless it be from an hospital, institution or coroner's case, without the regular permit. No body can be buried within the limits of the city of New York, whether in a cemetery, vault or tomb without a special permit from the Board of Health, and this same requirement is enforced regarding the disintering or removal of a body from any grave, vault or tomb located as above. No new burying ground will be allowed within the city, nor can any existing cemetery, Trinity and Woodlawn Cemeteries excepting, be opened, and vault or tomb be disturbed without the stated permit, and every body deposited in such must lie at least within six feet of the surface of the ground, and four feet below any closely adjacent street. A body cannot be transported across a ferry, or in a boat, or railroad car without the requisite permit, but any permit issued within the

States of New York and New Jersey bearing the place of burial on its face will obviate the necessity of securing a permit from the local Health Board, if accompanied by a body.

All cases of sudden deaths, deaths by violence, poison, accident or injury, or otherwise unnatural within the City of New York come under the jurisdiction of the coroner of New York, and the offices of this official is in the same building as the Board of Health. Public funerals of any kind, of persons old or young, dying from contagious diseases are strictly prohibited, and such bodies must be buried in properly sealed coffins or caskets within forty-eight hours after death. No permit will be issued by the Board of Health for the disinterment of a body unless the specific authorization from the nearest relative or friend or agent accompanies the application. Bodies from incoming steamers can only be removed by permit from the Board of Health. If arriving in New York City, and if by train arriving in Jersey City or Hoboken, from a distance without the State of New Jersey a new permit must be obtained in the latter cities before the body can be brought into New York City.



NEWTOWN TAX.

The Newtown Tax was inaugurated by the Newtown, L. I., Board of Health some years ago, with the avowed object of relieving the township to a large extent of a tax necessary to keep the roads in good condition, and consists of \$1 imposed for each interment in the town limits. The measure proved to be very objectionable to the undertakers of New York and Brooklyn, and they made repeated but unsuccessful efforts to induce the Legislature to remove it. The claim was advanced that the object of the measure was not carried out, but, despite the opposition that had been marshalled against its continuance, the tax remains in force. The Newtown Board of Health has an office near the headquarters of the Brooklyn Board of Health and another in New York, at 62 East Houston Street, and permits are obtained for interments at either place for the cemeteries within its jurisdiction. No charge is made for bodies of persons who die as charges on public institutions, or whose survivors are too poor to pay the required tax. About 2,000 acres in Newtown are utilized for cemetery purposes, and nearly 1,500,000 bodies are buried in the various cemeteries comprising the same. The average yearly income derived by the town of Newtown from this tax is \$35,000. These cemeteries come under the Newtown tax requirement: Calvary, Mount Zion, Linden Hill, Cypress Hills, New Union Fields, St. John, St. Michael's, Mount Olivet, Evergreens, Union Field, Macpela and Lutheran.

Portions of Calvary, Evergreens and Cypress Hills are exempt from the tax for which see those Cemeteries.

UNITED STATES CREMATION CO.,**CREMATORY, FRESH POND, L. I.****OFFICE, 62 E. HOUSTON ST., NEW YORK.**

The crematory and columbarium of the United States Cremation Company is located near Fresh Pond Station, Long Island Railroad, opposite Lutheran Cemetery, about four miles from the Brooklyn Bridge, and all East River ferries above that point. It is reached by Thirty-fourth Street ferry, James Slip ferry, and rail from Long Island City; Roosevelt, Grand Street, Broadway, Tenth Street and Twenty-third Street ferries, by North Second Street cars, Brooklyn, E. D., or by Bushwick Avenue cars and steam cars from Bushwick. From Brooklyn by the Myrtle Avenue, Greene and Gates Avenue cars, or Union Elevated Railroad to Ridgewood, and thence by Lutheran Cemetery cars.

The company charges \$35 for an incineration of an adult, and \$25 for a child under ten years, prepaid. Incinerations are made daily, and applications for the same must be made at the company's office with the regular permits as are procured for the burial of a body. All bodies are incinerated in the clothing as received, but no coffin or casket is allowed to be removed from the crematory but is burned up after the incineration takes place. The ashes are delivered at the company's office the day after the incineration. Over 1,000 bodies have been cremated by this company. Louis Lange is President; D. W. Craig, Treasurer, and S. Berendsohn, Secretary.

ERRATA.

Flushing Cemetery, page 40, name George Paple, Secretary, read George Pople.

Title New York Cemetery, page 78, read New York Bay Cemetery.

INDEX.

CEMETERY.	PAGE
Ahawa Cheseds.....	4
Arlington.....	4
Baptist.....	7
Bayside.....	7
Bay View.....	8
Beechwood.....	9
Bergen.....	11
B'nai Abraham.....	11
B'nai Israel.....	12
B'nai Jacob.....	13
B'nai Seshurun.....	13
Calvary.....	14
Cedar Grove.....	18
Cedar Lawn.....	20
Chevra B'nai Sholau.....	21
City Cemetery, New York.....	21
City Cemetery, Brooklyn.....	22
City Cemetery, Jersey City and Hoboken.....	23
City Cemetery, Newark.....	23
City Cemetery, Paterson.....	25
Clinton.....	25

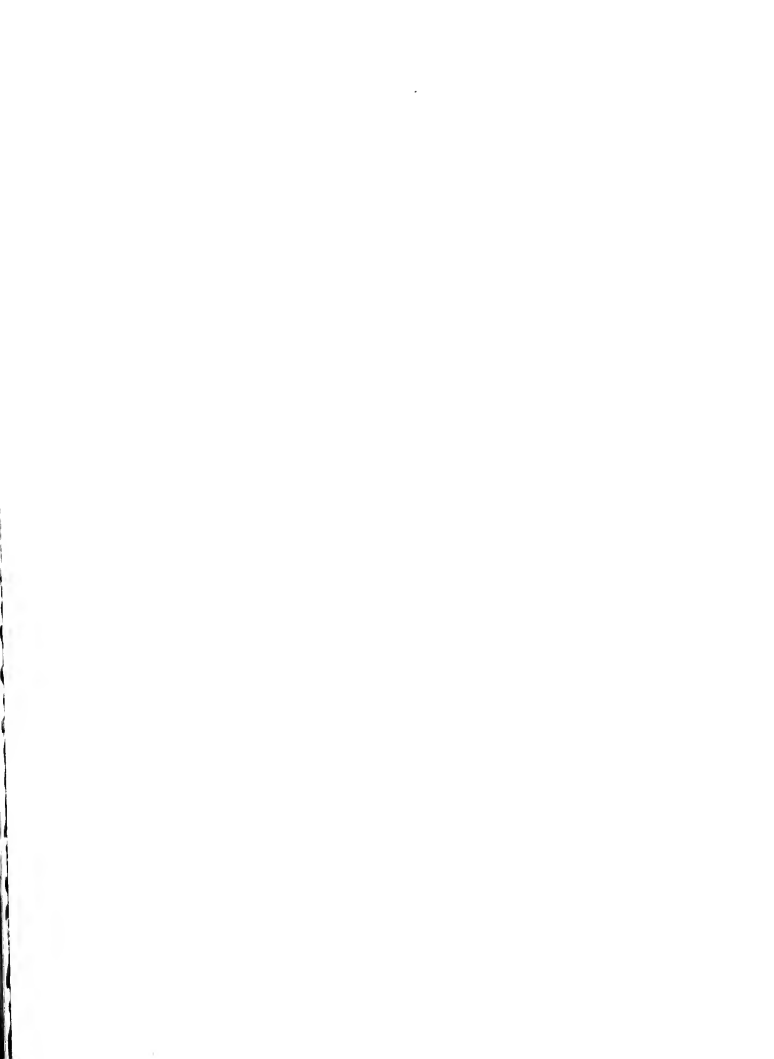
Constable Hook.....	26
Cypress Hills.....	26
Dutch Reformed.....	28
Episcopal.....	30
Evergreens.....	30
Evergreen, Elizabeth, N. J.....	32
Evergreen, New Brunswick, N. J.....	32
Fairlawn.....	33
Fairmount.....	35
Fairview.....	36
Flatlands.....	37
Flower Hill.....	38
Flushing.....	38
Fountain.. ..	40
Friendly Hand.....	41
Friends.....	41
Greenwood.....	42
Hazelwood.....	46
Holy Cross.....	46
Hoboken.....	47
Holy Name.....	48
Holy Sepulchre, East Orange, N. J.....	50
Holy Sepulchre, New Rochelle, N. Y.....	51
Holy Trinity.....	51
Jersey City.....	52
Kensico.....	52
Laurel Grove.....	57

Linden Hill.....	58
Lutheran.....	59
Macpela.....	61
Macpelah.....	61
Maimonides.....	62
Maple Grove... ..	62
Marble.....	63
Moravian.....	65
Mount Calvary.....	66
Mount Hope, Jamaica, L. I.....	67
Mount Hope, Westchester County, N. Y.....	67
Mount Neboh.....	70
Mount Olivet, Maspeth, L. I.....	71
Mount Olivet, Elizabeth, N. J.....	72
Mount Pleasant.....	72
Mount St. Mary's.....	74
Morgue of New York City	74
Mount Zion.....	75
National.....	76
New Union Fields.....	77
New York.....	77
New York Bay.....	78
Nyack Rural.....	79
Oak Hill.....	80
Oakland.....	81
Oheb Schalom.....	82
Paterson.....	82

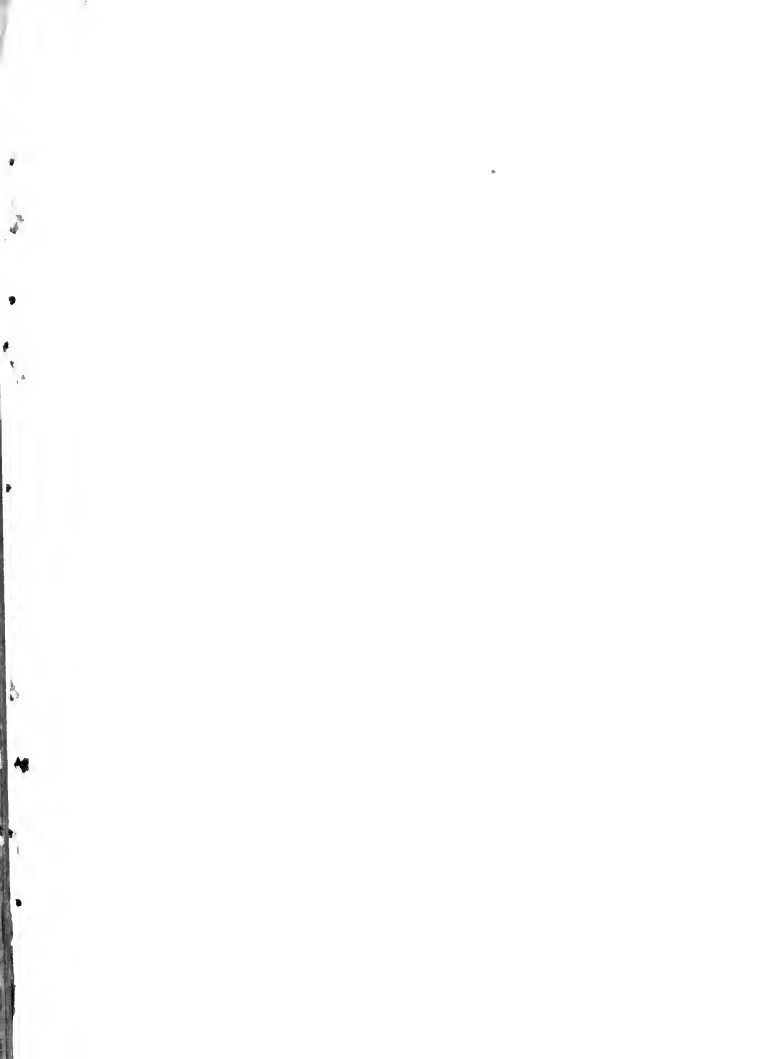
Potter's Field (<i>see City Cemeteries</i>).....	21-25
Presbyterian.....	83
Quaker.....	83
Raffiner.....	84
Rahway	84
Ridgefield.....	84
Rockland.....	86
Roman Catholic.....	89
Rosedale.....	90
St. John.....	91
St. John's, Orange, N. J.....	92
St. John's, Yonkers, N. Y.....	92
St. Joseph's.....	93
St. Mary's, Rahway, N. J.....	93
St. Mary's, Clifton, S. I.....	94
St. Mary's, Yonkers, N. Y.....	94
St. Michael's.....	95
St. Nicholas.....	96
St. Peter's, Jersey City.....	96
St. Peter's, Staten Island.....	97
St. Raymond's.....	98
Salem Fields.....	99
Sandy Hill.....	100
Schraalenberg.....	101
Shareth Israel.....	101
Silver Mount.....	102
Sleepy Hollow.....	103

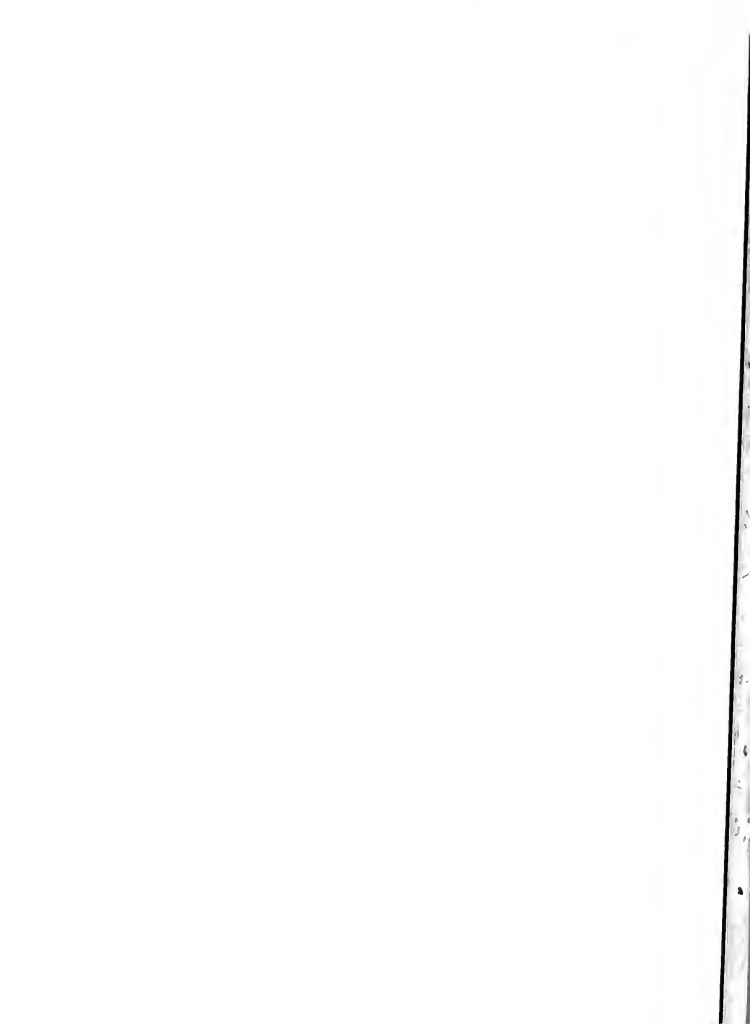
Speer's.....	105
Staten Island.....	106
Temple Bethel.....	106
Trinity, Brooklyn.....	107
Trinity, New York.....	107
Union, Rye, N. Y.....	108
Union Field.....	109
Washington.....	110
Weehawken and Palisade.....	111
White Plains Rural.....	112
Woodland, Newark, N. J.....	113
Woodland, Staten Island.....	113
Woodlawn.....	114
Board of Health.....	117
Newtown Tax.....	119
United States Cremation Co.....	120

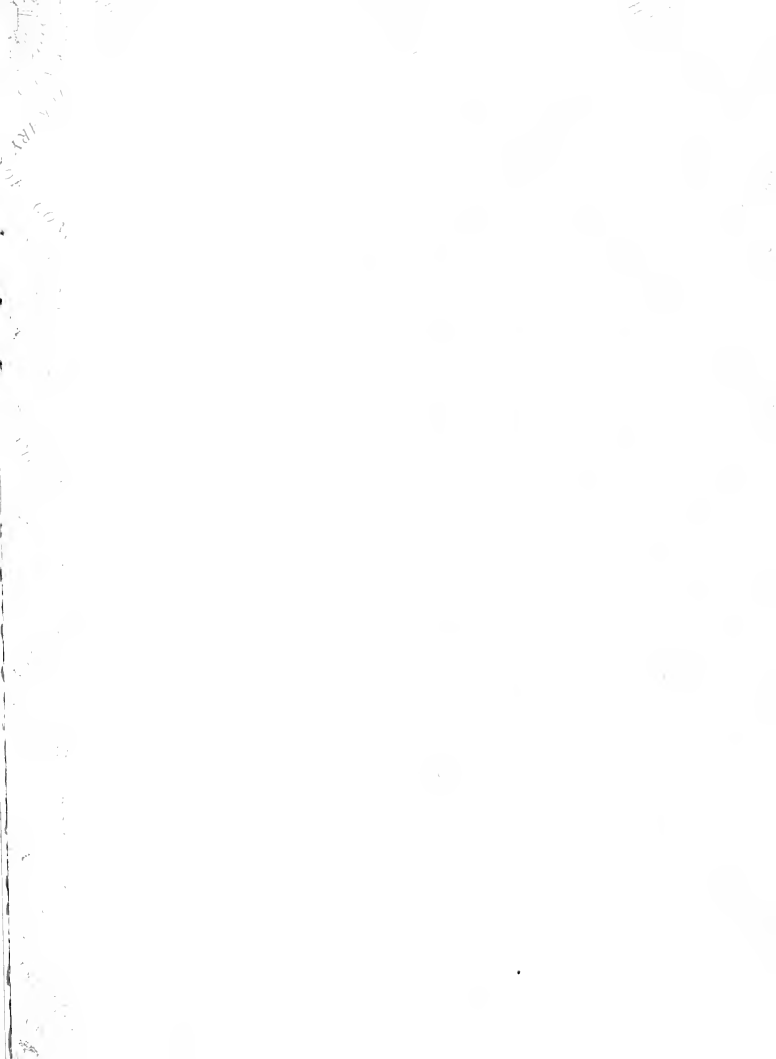












A1L5

.61

128

F